

TR500M

Tab Trim Removal System

Manual Number: MZ007

Release Date: 8/2015

© 2007-2009 Valco Cincinnati, Inc. All Rights Reserved.

This manual is furnished with the TR500M Tab Trim Removal System and may be used only in accordance with the terms of purchase.

No part of this manual may be reproduced, stored in a retrieval system, or transmitted, in any form or by any means, electronic, mechanical, recording, or otherwise, without the prior written permission of Valco Cincinnati, Inc. The information in this manual is furnished for educational purposes only, is subject to change without notice, and should not be construed as a commitment by Valco Cincinnati, Inc.

This manual was written and designed at Valco Cincinnati, Inc., 411 Circle Freeway Drive, Cincinnati, Ohio 45246.

Part Number: MZ007

Printed in the USA

Valco Cincinnati, Inc.

497 Circle Freeway Drive

Suite 490

Cincinnati, OH 45246

Tel: (513) 874-6550

Fax: (513) 874-3612

Email: sales@valcomelton.com

Web: <http://www.valcocincinnatiinc.com>

Valco Cincinnati Limited

Hortonwood 32

Telford, TFI 7YN, England

Tel: (+44) 1952-677911

Fax: (+44) 1952-677945

Email: sales@valco.co.uk

Web: <http://www.valco.co.uk>

Valco Cincinnati GmbH

Bonnerstrasse 349

40589 Dusseldorf-Benrath, Germany

Tel: +49 211 984 798-0

Fax: +49 211 984 798-20

Melton S.L.U.

Pol. Industrial Agustinos

calle G, n. 34

31160 Orcoyen, Navarra, Spain

Tel: (34) 948-321-580

Fax: (34) 948-326-584

Valco Melton France

Technoparc des Hautes Faventines

32 Rue Jean Bertin

26000 Valence

Tel: +33 (0)4 75 78 13 73

Fax: +33 (0)4 75 55 74 20

Declaration of Conformity

(According to EN 45014)



Manufacturer:

Valco Melton
A division of Valco
Cincinnati, Incorporated
411 Circle Freeway Drive
Cincinnati, OH 45246
USA

Authorized Representatives in Europe:

Valco Cincinnati, Ltd.
Unit 7-8
Hortonwood 32
Telford TF1 7YN
England

Melton S.L.U
Pol. Industrial
Agustinos
calle G, n. 34
31160 Orcoye
Navarra, Spain

declares that the product:

Product Name:

TR500M Tab Trim
Removal System

complies with the following Council Directives:

Safety of Machinery:

2006/42/EC

Low Voltage Equipment:

2006/95/EC

EMC:

2004/108/EC

and conforms to the following standards:

Safety:

EN60204-1:2006
EN13849-1

Risk:

EN14121-1:2007

EMC Emissions:

EN61000-6-4:2007
EN61000-4-2

EMC Immunity:

EN61000-6-2:2005
EN61000-4-3
EN61000-4-4
EN61000-4-5
EN61000-4-6
EN61000-4-8
EN61000-4-11

Place and Date:

Cincinnati, Ohio USA
CE Mark first fixed 2006

Signature:

David H. Swedes,
Director of Engineering &
Manufacturing

This Declaration of Conformity has been generated electronically and is legally binding without signature



TABLE OF CONTENTS

Section 1 - Introduction	1-1
<i>Description</i>	<i>1-1</i>
<i>Types Available</i>	<i>1-1</i>
Section 2 - Safety Information	2-1
<i>General Information</i>	<i>2-1</i>
<i>Warnings</i>	<i>2-1</i>
Section 3 - Wiring guidelines	3-1
<i>Routing Low-Voltage Leads</i>	<i>3-1</i>
<i>Connecting the Electrical Power</i>	<i>3-1</i>
Section 4 - Installation	4-1
<i>Mounting</i>	<i>4-1</i>
Section 5 - Operation	5-1
<i>Adjustment</i>	<i>5-1</i>
<i>Operation</i>	<i>5-5</i>
Section 6 - Maintenance	6-1
Section 7 - Specifications	7-1
<i>Technical Information:</i>	<i>7-1</i>
<i>Features</i>	<i>7-1</i>
Section 8 - Part Number List	8-1
<i>How to Order Parts</i>	<i>8-1</i>
<i>USA:</i>	<i>8-1</i>
<i>England:</i>	<i>8-1</i>
<i>Germany:</i>	<i>8-1</i>
<i>Spain:</i>	<i>8-1</i>

Section 8 - Continued

TR500M 110VAC, 60 Hz (738xx513)	8-2
Wiring the TR500M 110 VAC, 60 Hz (738xx513)	8-5
<i>Units built before 2005 and units built from March 2009 to present.</i>	<i>8-5</i>
Wiring the TR500M 110 VAC, 60 Hz (738xx513)	8-6
<i>Units built from 2005 to February 2009</i>	<i>8-6</i>
TR500M 230VAC, 60 Hz (738xx514)	8-7
Wiring the TR500M 230VAC, 60 Hz (738xx514)	8-10
<i>Units built before 2005 and units built from March 2009 to present.</i>	<i>8-10</i>
Wiring the TR500M 230VAC, 60 Hz (738xx514)	8-11
<i>Units built from 2005 to February 2009</i>	<i>8-11</i>
TR500M 110 VAC, 50 Hz (738xx515)	8-12
Wiring the TR500M 110 VAC, 50 Hz (738xx515)	8-14
TR500M 230 VAC, 50 Hz (738xx516)	8-15
Wiring the TR500M 230 VAC, 50 Hz (738xx516)	8-17
TR500M Pneumatic (Air) Tab Trim Remover (582xx586)	8-18
TR500M 480 VAC, 60 Hz, 3-Phase (738xx555)	8-22
Wiring Diagram TR500M 480 VAC, 60 Hz, 3-Phase (738xx555)	8-25
Replacement Parts and Accessories	8-26
Fuses	8-26
Polycord Whips	8-26
Optional Product Guide	8-26
Section 9 - Warranty	9-1
General Warranty Information	9-1
Cold Glue Equipment and Electronic Controls	9-1
Hot Melt Units, Hoses, Valves, Guns, and Related Equipment	9-1
Section 10 - Service	10-1

SECTION 1 - INTRODUCTION

Description

Valco Cincinnati has prepared this manual as an aid for installing, operating, and servicing the TR500M Tab Trim Removal System. It also contains a list of part numbers for replacement parts. If you need more information, please contact your Valco Cincinnati representative.

The TR500M cleans off the tab trim before the box reaches the glue station. It is available in several voltages and can easily be installed on most flexo-folder-glueers. The system features a mounting kit that should accommodate most requirements.

The unit was introduced as the TR500. The new TR500M unit features a smaller motor, shorter drive shaft, and a re-designed guard assembly. The unit is lighter and shorter than the standard TR500. It can be installed into space-restricted areas that will not accept the TR500. The mounting kit remains the same for both systems.

Types Available

The TR500M is available in five electric models and one pneumatic (air-operated) model.

Part Number	Description
738xx513	Electric, 110 VAC, 60 Hz
738xx514	Electric, 230 VAC, 60 Hz
738xx515	Electric, 110 VAC, 50 Hz
738xx516	Electric, 230 VAC, 50 Hz
738xx555	Electric, 480 VAC, 60 Hz three-phase
582xx586	Pneumatic (air-operated)

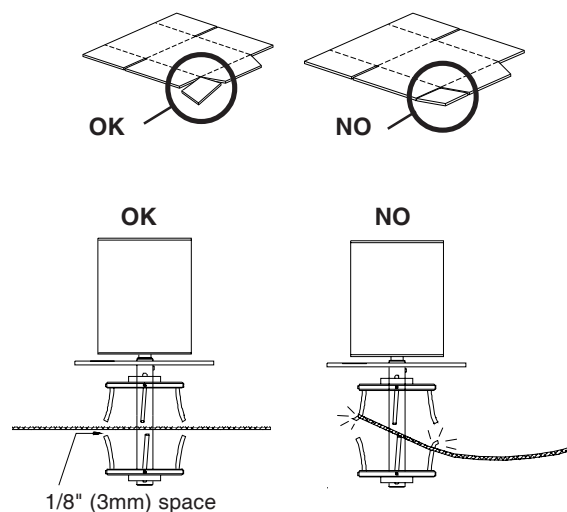


IMPORTANT NOTICE!

The TR500M is designed to remove **hanging** tab trim. The TR500M will not remove tab trim that is still in the original board position (not cleanly separated from the board by the die cutter). The tab trim must be hanging away (down) from the board.

Warped boards will cause premature wear to the whips.

The TR500M will not produce expected results without a proper and accurate guide system for the board. The guides should ensure that there is 1/8" (3mm) between the board and the whips of the TR500M.



SECTION 2 - SAFETY INFORMATION

General Information

It is the purchaser's responsibility to ensure that all local, county, state, and national codes, regulations, rules, and laws relating to safety and safe operating conditions are met and followed.

The best safeguard is trained personnel. The purchaser is responsible for providing personnel who are adequately trained to install, operate, and maintain Valco components and systems.

This section contains information that is essential to the safety of personnel. Safety information is included throughout the rest of the manual as well. The following safety conventions are used to indicate potential safety hazards:

WARNING!



This symbol indicates the presence of un-insulated dangerous voltage within the product's enclosure. This voltage may cause electrical shock or fire. **FAILURE TO OBSERVE WARNING MAY RESULT IN DEATH, PERSONAL INJURY, AND/OR EQUIPMENT DAMAGE.**

WARNING!



This convention is used to alert the user to important installation, operation, and/or maintenance information. **FAILURE TO OBSERVE WARNING MAY RESULT IN DEATH, PERSONAL INJURY, AND/OR EQUIPMENT DAMAGE.**

CAUTION!



This convention is used to alert the user to important installation, operation, and/or maintenance information. **FAILURE TO OBSERVE CAUTION MAY CAUSE EQUIPMENT DAMAGE.**

Warnings

All personnel involved with the installation, operation, and maintenance of the equipment must read and thoroughly understand the following warnings:

WARNING!



Disconnect all power before opening the control. **OTHERWISE, DEATH OR PERSONAL INJURY COULD OCCUR.** Only qualified personnel should open and service the control.

WARNING!



Promptly repair or replace all worn or damaged electrical wiring and equipment wires. **OTHERWISE, DEATH OR PERSONAL INJURY COULD OCCUR.**

Warnings - Continued

WARNING!



Properly route all electrical wires. OTHERWISE, DEATH, PERSONAL INJURY, OR DAMAGE TO THE MOVING PARTS OF THE MACHINE MAY OCCUR.

WARNING!



When making adjustments or performing checkout procedures, stay clear of any moving mechanical parts and do not touch exposed electrical equipment or electrical connectors. OTHERWISE, DEATH OR PERSONAL INJURY COULD OCCUR.

WARNING!



Promptly repair or replace all worn or damaged parts. OTHERWISE, PERSONAL INJURY OR EQUIPMENT DAMAGE COULD OCCUR.

WARNING!



There is a possibility that some tab trims may be thrown outside of the unit. Always wear eye protection and proper clothing. OTHERWISE, PERSONAL INJURY COULD OCCUR.

SECTION 3 - WIRING GUIDELINES

Routing Low-Voltage Leads

Warning!



Failure to observe could result in personal injury, death, or damage to equipment.

When routing low-voltage leads, follow these guidelines:

- Do not route low-voltage leads in the same conduit as wires carrying a high-current load.
- Do not route low-voltage leads adjacent to, or across wires carrying a high-current load. If low-voltage leads must cross or run parallel to wires carrying high current, keep the leads at least 6" (152 mm) from high-current wires.
- Do not splice or solder leads.
- Trim leads to the required length. Leads should be only as long as necessary for installation.
- All wiring should be in conduits or wireways.

Connecting the Electrical Power

Warning!



Electrical connections should be made only by experienced service personnel! Failure to observe could result in personal injury, death, or damage to equipment.

When connecting the supply of electrical power, follow these guidelines:

- Connect the control to a “clean” supply of electrical power. Use a dedicated circuit if possible.



If a dedicated circuit is not available, do not connect the control to a circuit that supplies high-amperage equipment—use another circuit such as a lighting circuit. Otherwise, equipment may not function properly.

SECTION 4 - INSTALLATION

Mounting

1. Choose an appropriate mounting location on the tab side of your Flexo-folder-gluer or folder-gluer. The mounting location for the TR500M system must adequately support the trim remover unit and the bracket kit, and the vibration and heavy traffic of corrugated board traveling through the TR500M.
2. Determine whether the unit will be mounted with the motor above or below the whips (Figure 4-1). There should be no interference between the TR500M and your machine.

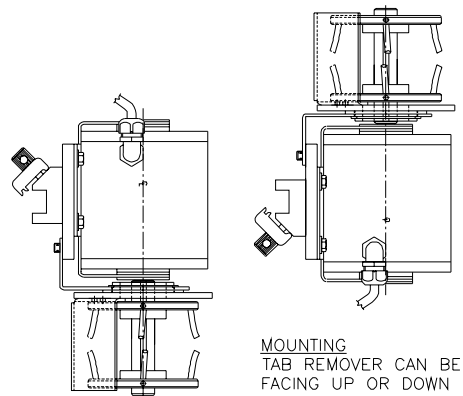


Figure 4-1. Motor Up Mounting vs Motor Down Mounting

3. The TR500M should be mounted in a location which allows adjustment of the unit, and replacement of the polycord whips. The position of the unit relative to product flow (front to back of the machine) should remain constant once the unit has been installed.
4. Determine the mounting style (Figure 4-2). Drill and tap holes in your folder gluer to accommodate the mounting base. The two mounting bases are linked with either a straight or elbow 1" (25 mm) bar. Determine the required bar size for your installation and cut to length if necessary.



The supplied brackets are attached to the mounting base. The bar then slides into the brackets, and is secured with the supplied clamps. Use two clamps for each mounting base or right angle clamp.



Make sure that the brackets are mounted in such a way that in-out and up-down sliding adjustments of the discs are possible.

Mounting - continued

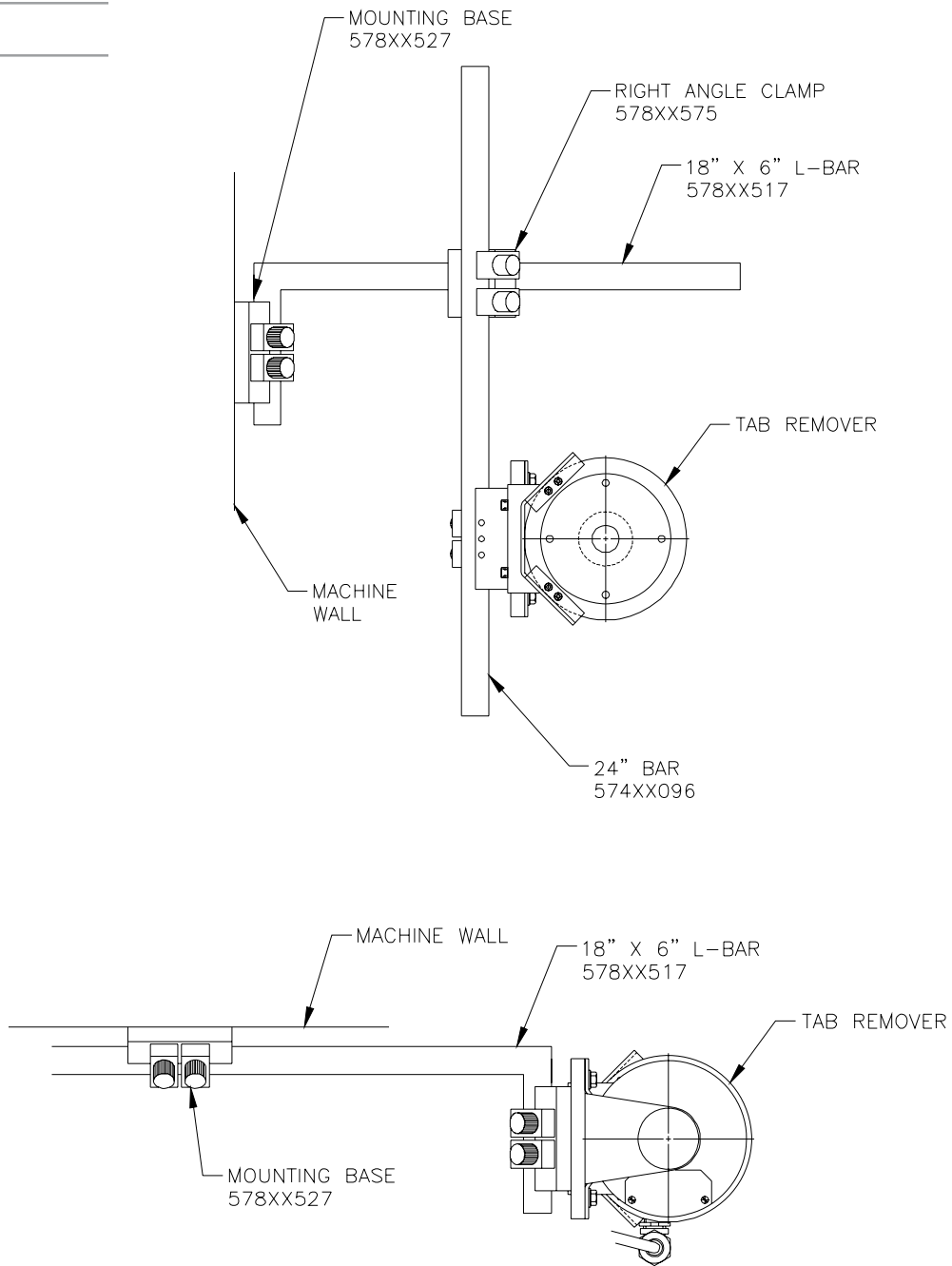


Figure 4-2 - Mounting Options

Mounting - continued

WARNING! Disconnect all electrical power from the tab remover before removing the cover from the switchbox. OTHERWISE, DEATH OR PERSONAL INJURY MAY RESULT.



5. Remove the cover of the unit's ON/OFF switch box. Drill/tap the necessary bolt holes on your folder-gluer to mount the switch box.



The operator must be able to easily operate the ON/OFF switch from outside the process area of the machine.

6. Connect the power through the stop circuit of the machine. In the event that the machine stops due to jammed product in the folding section, the TR500M will also stop. This will prevent premature wear of the whips.

SECTION 5 - OPERATION

Adjustment

The gap between the ends of the upper and lower whips should be approximately 3/8-1/2" (10-13 mm). To adjust this gap, do the following:



WARNING! Disconnect all electrical power from the tab remover before making adjustments. OTHERWISE, DEATH OR PERSONAL INJURY MAY RESULT.

1. Disconnect the power to the TR500M. Then, loosen the set screws on the discs (Figure 5-1).
2. Slide the discs up or down as necessary.



When the gap is properly adjusted and product is running through the machine at a steady rate, the ends of the whips should barely make contact with the surface of the board, thereby minimizing the risk of wear to the board or the whips.

3. Tighten the set screws.

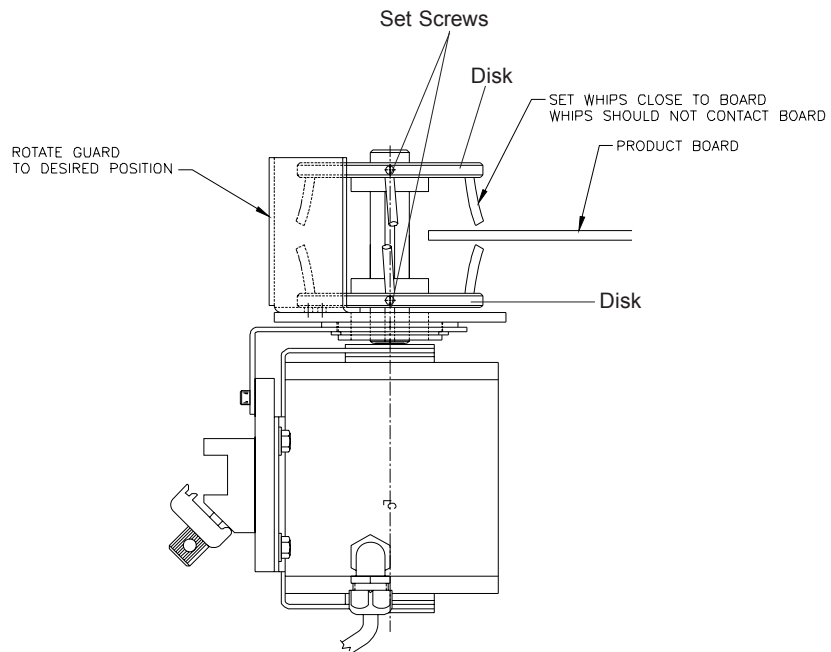


Figure 5-1. Adjustment of the Whips

Adjustment - continued

4. Make sure the disks rotate against the travel of the board (Figure 5-2). The standard (factory-set) rotation of the disks is clockwise. If adjustment is necessary, see the Wiring Diagrams in the Parts List Section.



The rotation of the disks cannot be changed on the Pneumatic Tab Trim Remover (582xx586).

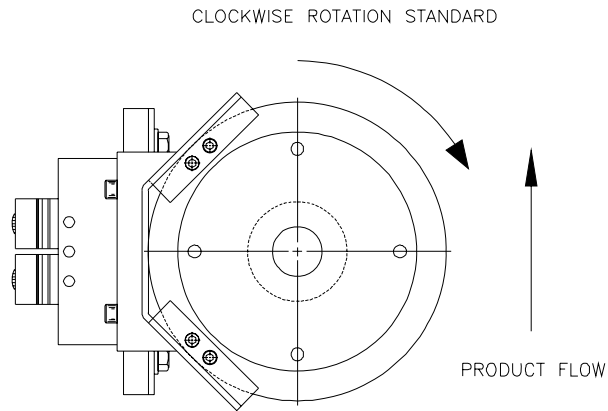


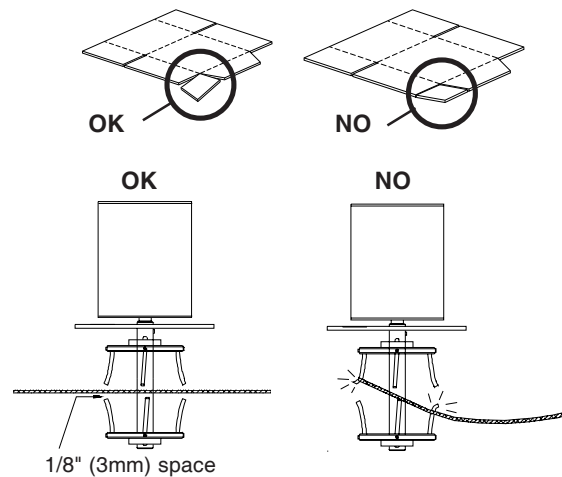
Figure 5-2. Product Flow



IMPORTANT NOTICE!

The TR500M is designed to remove **hanging** tab trim. The TR500M will not remove tab trim that is still in the original board position (not cleanly separated from the board by the die cutter). The tab trim must be hanging away (down) from the board.

Warped boards will cause premature wear to the whips.



Adjustment - continued

5. The pneumatic tab trim remover comes with a product guide to ensure a 1/8-inch (3mm) gap between the board and the whips (Figure 5-3). The product guide is adjustable by loosening the knobs on either side of each guide, as shown in Figure 5-3.

An optional Product Guide (579xx247) is available for the electric tab trim remover models (Figure 5-4). This guide is recommended to ensure a 1/8-inch (3mm) gap between the board and the whips, preventing premature wear of the whips.. The Product Guide will also prevent warped boards from damaging the whips.

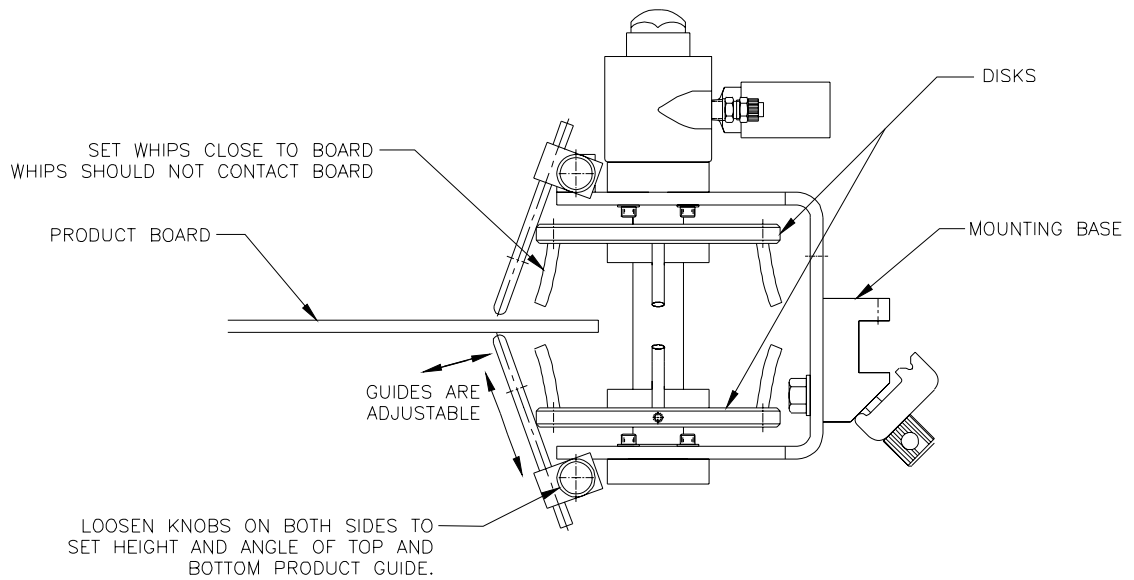
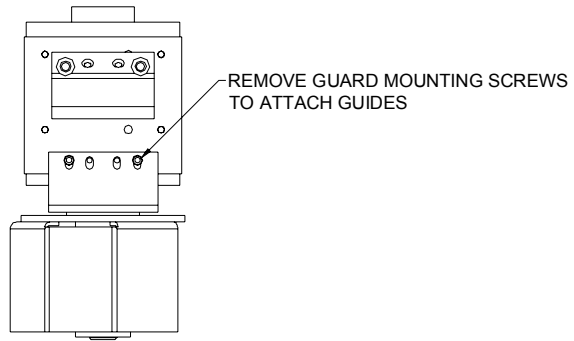
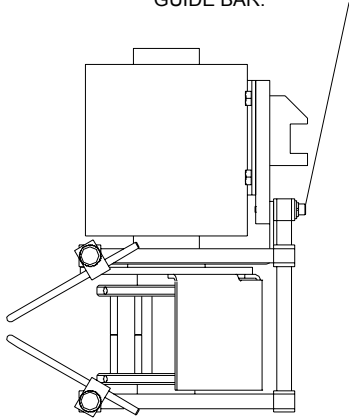


Figure 5-3. Pneumatic Tab Trimmer Product Guide Adjustment

Adjustment - continued



MOUNT GUIDE BRACKET ON TOP OF GUARD BRACKET WITH SCREW PROVIDED. THE TOP GUIDE WILL HAVE TO BE REMOVED DURING MOUNTING. TO DO THIS LOOSEN SCREWS ON BOTH SIDES OF THE TOP GUIDE AND PULL OUT UPPER GUIDE BAR.



TO ADJUST GUIDES LOOSEN SCREWS ON BOTH SIDES OF THE GUIDE. SET GUIDE TO DESIRED POSITION AND TIGHTEN SCREWS TO LOCK IN PLACE.

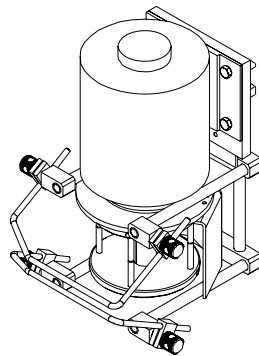
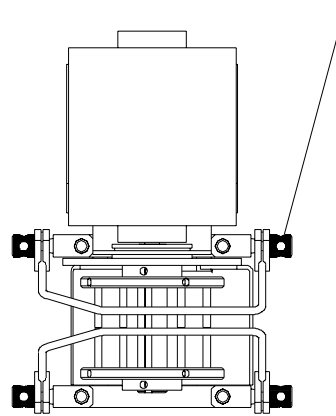


Figure 5-4. Optional Electric Tab Trimmer Product Guide (579xx247)

Operation

1. Jog a piece of product into the TR500M and stop the folder-gluer machine. Adjust the TR500M in or out to ensure that the whips cover as much of the tab as possible without any chance of the board making contact with the shaft between the discs.
2. Adjust the TR500M up or down so that the board is centered in the gap between the upper and lower ends of the whips when the TR500M is on.

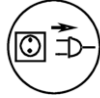


Periodically check the condition and length of the whips. Valco Cincinnati recommends that you change all whips at the same time. To maintain the required gap as the whips wear down, either replace the whips, or if the whips are still in good condition, adjust their position to maintain the proper gap between the product board and the whips.

SECTION 6 - MAINTENANCE

To keep the TR500M Tab Trim Remover in excellent working condition, do the following:

WARNING! Disconnect all power before performing any maintenance or adjustments. OTHERWISE, DEATH OR PERSONAL INJURY COULD OCCUR.



1. Check the condition of the polycord whips daily in order to maintain 1/8" (3mm) gap between the board and the whips.
2. Replace all whips at the same time.
3. Empty the waste area of removed tab trims before excess waste interferes with the operation of the whips.
4. Replace any worn parts immediately. See the Part Number List Section for ordering information.

SECTION 7 - SPECIFICATIONS

Technical Information:

Height: 11.7 in. (297 mm)

Diameter: 6.8 in. (173 mm)

Weight: 23 lb (10.5 kg)

Features:

- Thermal protected 1/6 HP motor (electric models)
- Pneumatic (air-operated) model available
- Durable poly-cord whip system for tab ejection
- Field-select, clockwise or counterclockwise rotation (electric models only)
- Easy-adjust, transparent safety shield
- Includes mounting hardware

SECTION 8 - PART NUMBER LIST

How to Order Parts

To order parts, please contact your closest Valco office by mail, phone, or Email:

USA:

Valco Cincinnati, Inc.
497 Circle Freeway Drive
Suite 490
Cincinnati, OH 45246
Tel: (513) 874-6550
Fax: (513) 874-3612
Email: sales@valcomelton.com
Web: <http://www.valcocincinnatiinc.com>

England:

Valco Cincinnati Limited
Hortonwood 32
Telford, TFI 7YN, England
Tel: (+44) 1952-677911
Fax: (+44) 1952-677945
Email: sales@valco.co.uk
Web: <http://www.valco.co.uk>

Germany:

Valco Cincinnati GmbH
Bonnerstrasse 349
40589 Dusseldorf-Benrath, Germany
Tel: +49 211 984 798-0
Fax: +49 211 984 798-20

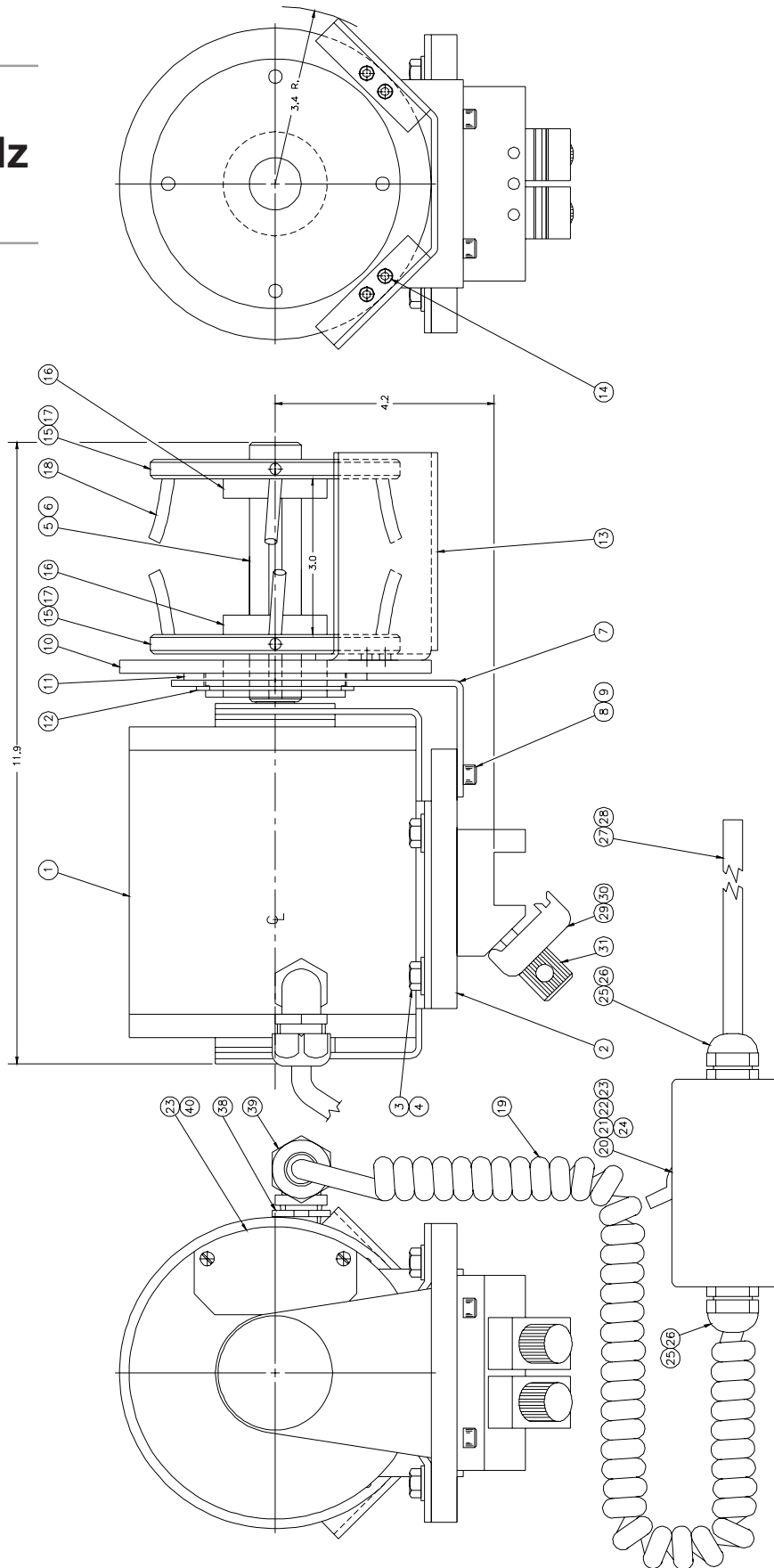
Spain:

Melton S.L.U.
Pol. Industrial Agustinos
calle G, n. 34
31160 Orcoyen, Navarra, Spain
Tel: (34) 948-321-580
Fax: (34) 948-326-584

France:

Valco Melton France
Technoparc des Hautes Faventines
32 Rue Jean Bertin
26000 Valence
Tel: +33 (0)4 75 78 13 73
Fax: +33 (0)4 75 55 74 20

TR500M
110VAC, 60 Hz
(738xx513)



TR500M 110 VAC, 60 Hz
(738xx513) - continued


Item	Description	Part Number	Quantity
1	Motor	110xx247	1
2	Motor plate	580xx988	1
3	Flat washer	798xx760	4
4	Screw	798xx608	4
5	Shaft	791xx271	1
6	Screw	798xx312	2
7	Guard bracket	581xx443	1
8	Flat washer	798xx758	2
9	Screw	798xx568	2
10	Guard pivot	781xx182	1
11	Wave spring washer	784xx118	1
12	Retaining ring	793xx655	1
13	Guard	781xx183	1
14	Screw	798xx083	4
15	Wheel	788xx595	2
16	Screw	799xx236	2
17	Screw	798xx835	8
18	Polycord whip	781xx184	24
19	Coiled cord	030xx269	1
20	Manual starter	110xx180	1
21	Thermal unit	085xx211	1
22	Wire terminal, splice	075xx257	1
23	Wire terminal, spade	075xx242	4
24	Wire terminal, ring	075xx070	3
25	Cord grip	066xx003	2
26	Locknut	066xx005	2
27	Cable	030xx117	120
28	Plug	061xx129	1
29	Base clamp	578xx507	1
30	Screw	798xx183	2
31	Clamp assembly	578xx543	6
32	Mounting base assembly	578xx527	1
33	Bracket bar	578xx517	1
34	Square bar	574xx072	1
35	Right angle clamp	578xx575	1

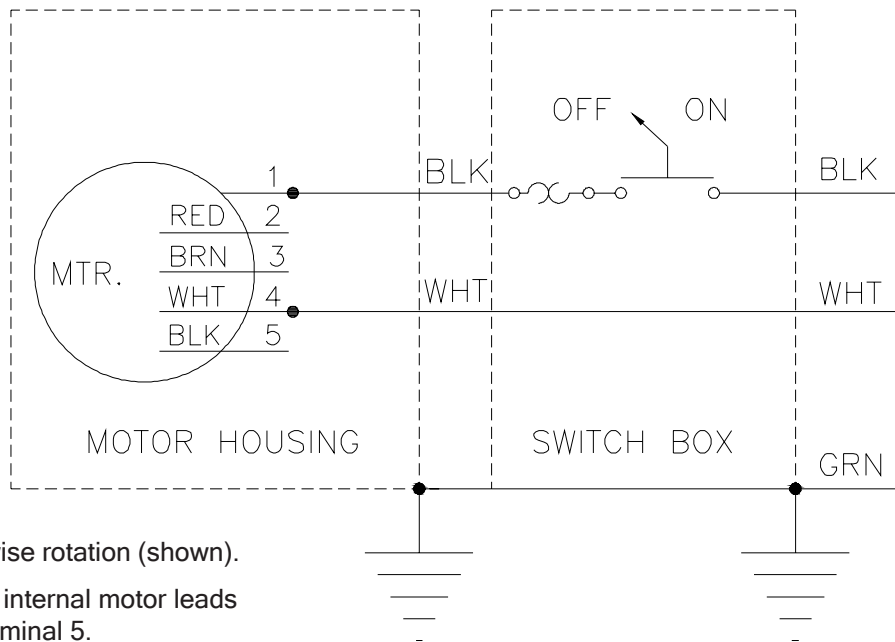
TR500M 110 VAC, 60 Hz
(738xx513) - continued

Item	Description	Part Number	Quantity
36	Tool	578xx505	1
37	Plastic insert plug	794xx026	4
38	Strain relief	066xx029	1
39	Locknut	066xx083	1
40	Wire terminal, female	075xx358	2
41	Illustration drawing	999XD738-189	1

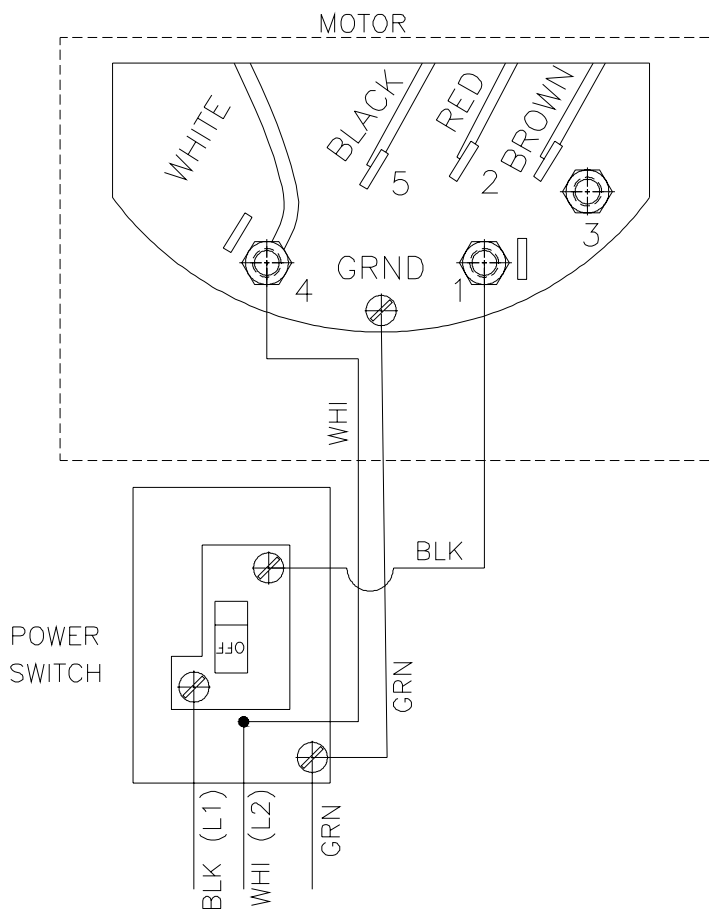
Wiring the TR500M
110 VAC, 60 Hz
(738xx513)

Units built before 2005
 and units built from March
 2009 to present.

 This configuration is for 738xx513 units built before 2005 and 738xx513 units built from March 2009 to present.




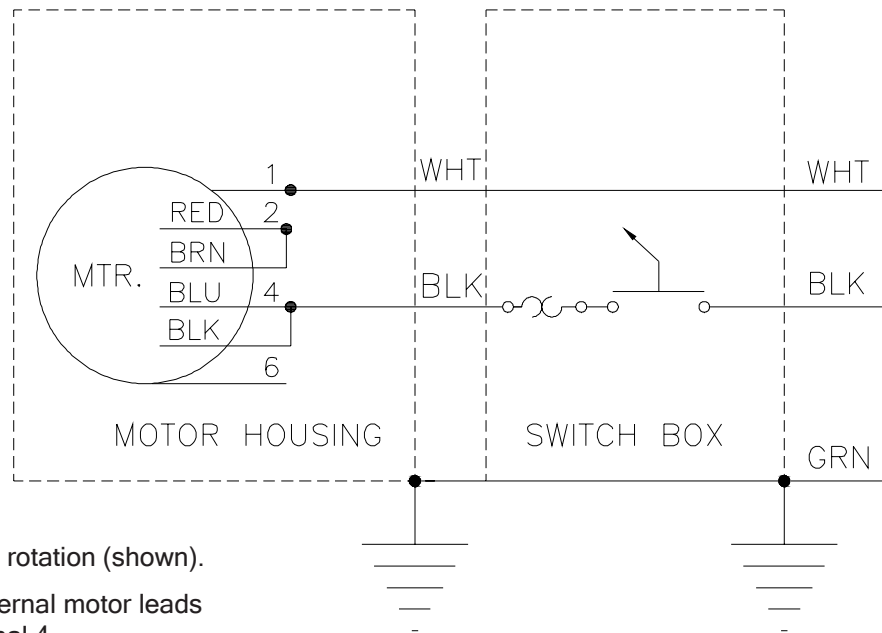
110VAC 60Hz counter clockwise rotation (shown).
 For clockwise rotation, switch internal motor leads
 Black to terminal 2, Red to terminal 5.



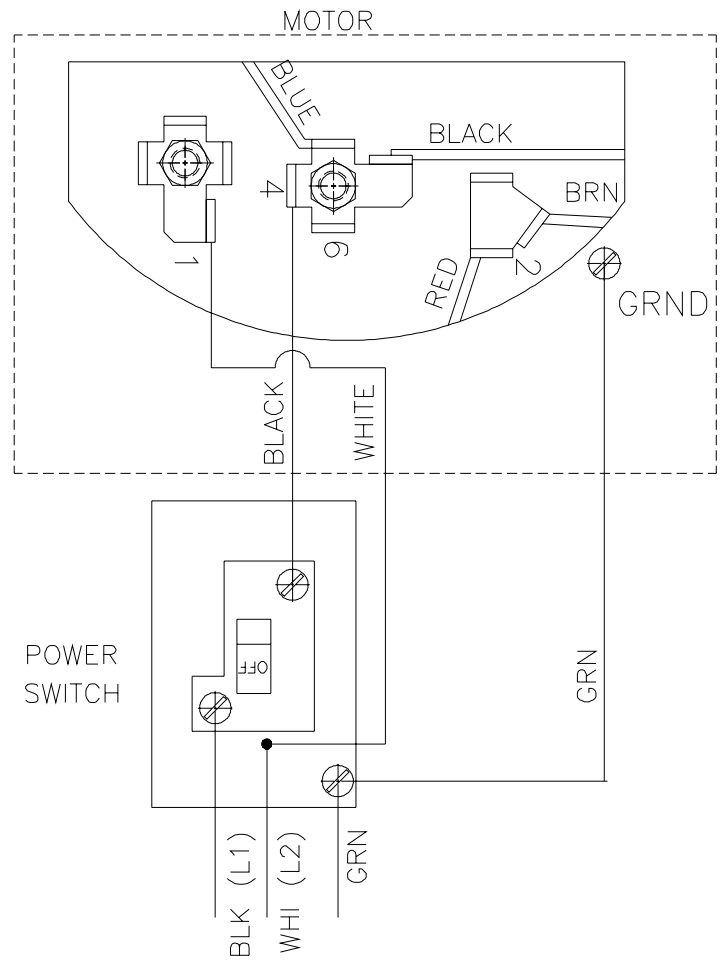
Wiring the TR500M
110 VAC, 60 Hz
(738xx513)

Units built from 2005 to
February 2009

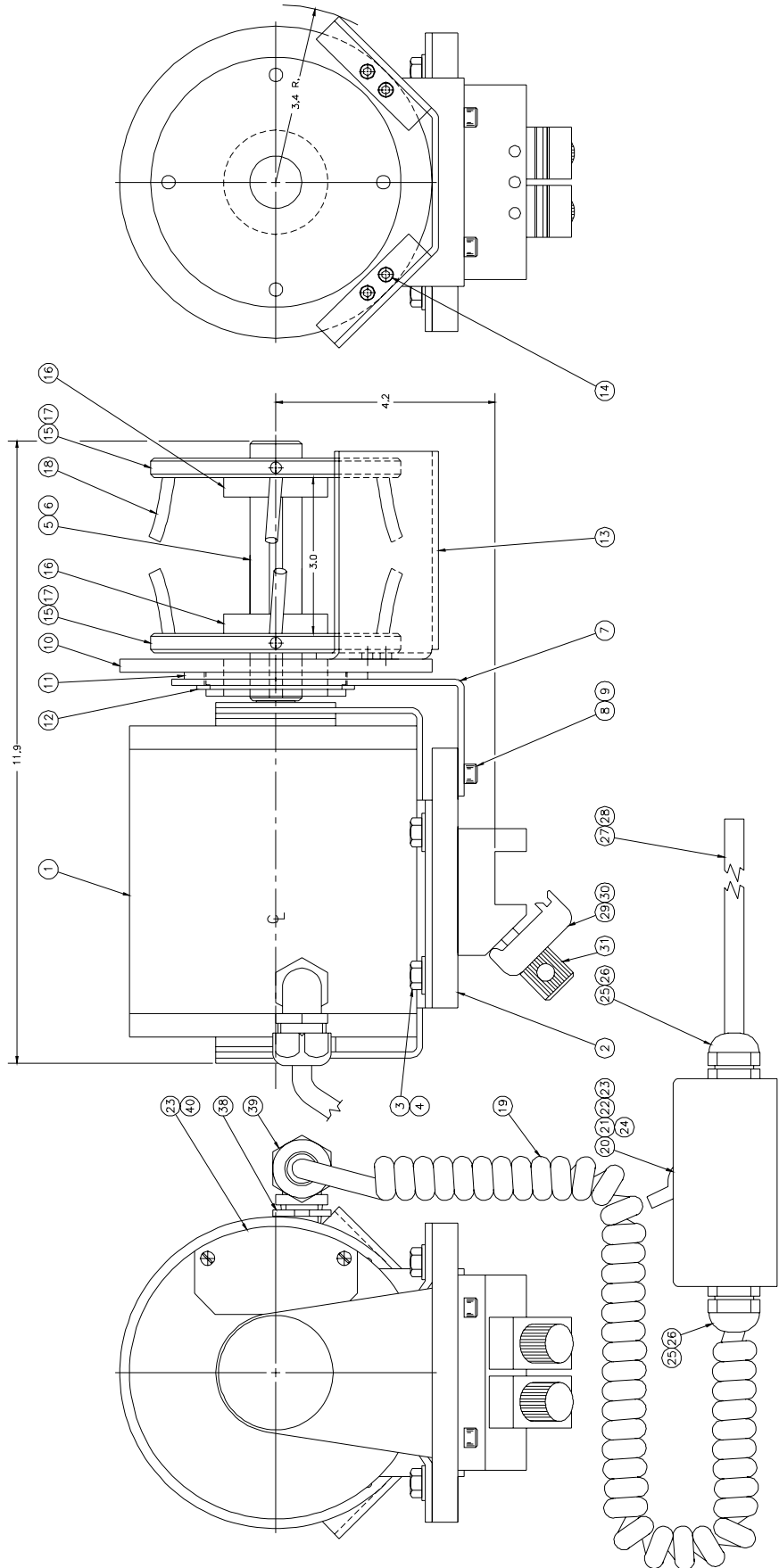
 This configuration is for 738xx513 units built from 2005 to February 2009



110VAC 60Hz counter clockwise rotation (shown).
 For clockwise rotation, switch internal motor leads Black to terminal 2, Red to terminal 4.



TR500M
230VAC, 60 Hz
(738xx514)



TR500M 230 VAC, 60 Hz
(738xx514) - continued

Item	Description	Part Number	Quantity
1	Motor	110xx247	1
2	Motor plate	580xx988	1
3	Flat washer	798xx760	4
4	Screw	798xx608	4
5	Shaft	791xx271	1
6	Screw	798xx312	2
7	Guard bracket	581xx443	1
8	Flat washer	798xx758	2
9	Screw	798xx568	2
10	Guard pivot	781xx182	1
11	Wave spring washer	784xx118	1
12	Retaining ring	793xx655	1
13	Guard	781xx183	1
14	Screw	798xx083	4
15	Wheel	788xx595	2
16	Screw	799xx236	2
17	Screw	798xx835	8
18	Polycord whip	781xx184	24
19	Coiled cord	030xx269	1
20	Manual starter	110xx180	1
21	Thermal unit	085xx256	1
22	Wire terminal, splice	075xx257	1
23	Wire terminal, spade	075xx242	4
24	Wire terminal, ring	075xx070	3
25	Cord grip	066xx003	2
26	Locknut	066xx005	2
27	Cable	030xx117	120
28	Plug	061xx130	1
29	Base clamp	578xx507	1
30	Screw	798xx183	2
31	Clamp assy	578xx543	6
32	Mounting base assy	578xx527	1
33	Bracket bar	578xx517	1
34	Square bar	574xx072	1
35	Right angle clamp	578xx575	1

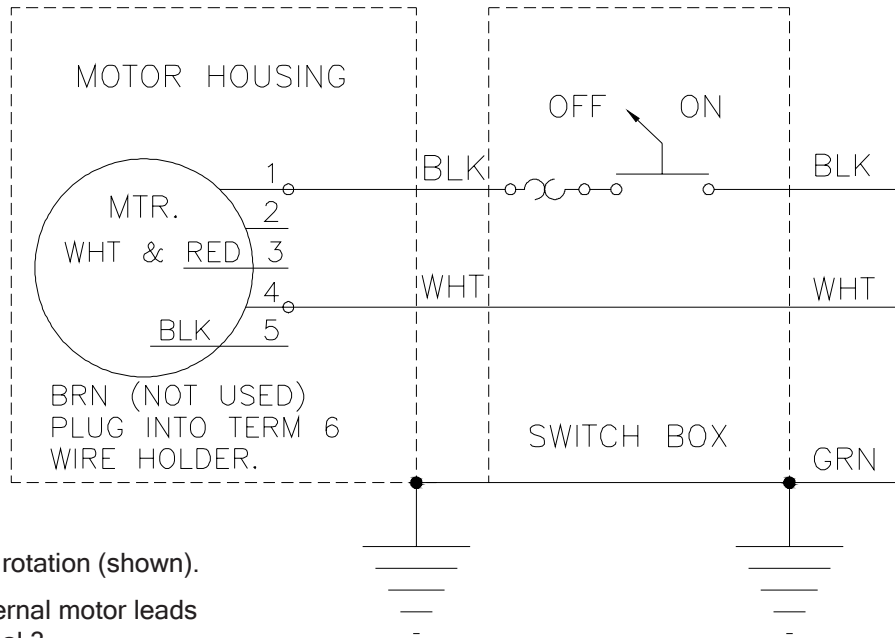
TR500M 230 VAC, 60 Hz
(738xx514) - continued

Item	Description	Part Number	Quantity
36	Tool	578xx505	1
37	Plastic insert plug	794xx026	4
38	Strain relief	066xx029	1
39	Locknut	066xx083	1
40	Wire terminal, female	075xx358	2
41	Illustration drawing	999XD738-189	1

Wiring the TR500M
230VAC, 60 Hz
(738xx514)

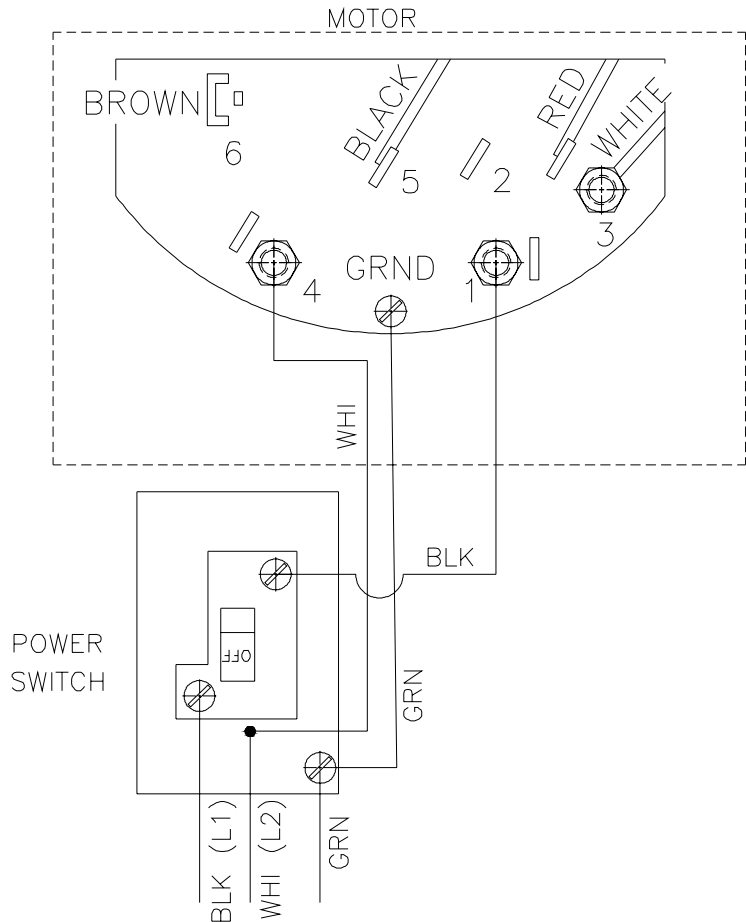
Units built before 2005
and units built from March
2009 to present.

i This configuration is for 738xx514 units built before 2005 and 738xx514 units built from March 2009 to present.




230VAC 60Hz counter clockwise rotation (shown).

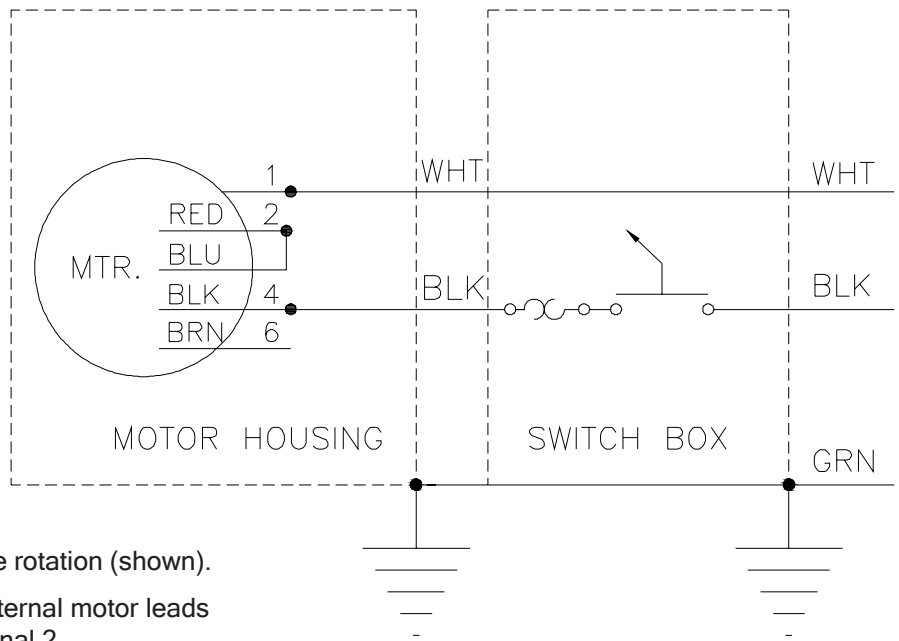
For clockwise rotation, switch internal motor leads
 Red to terminal 5, Black to terminal 3.



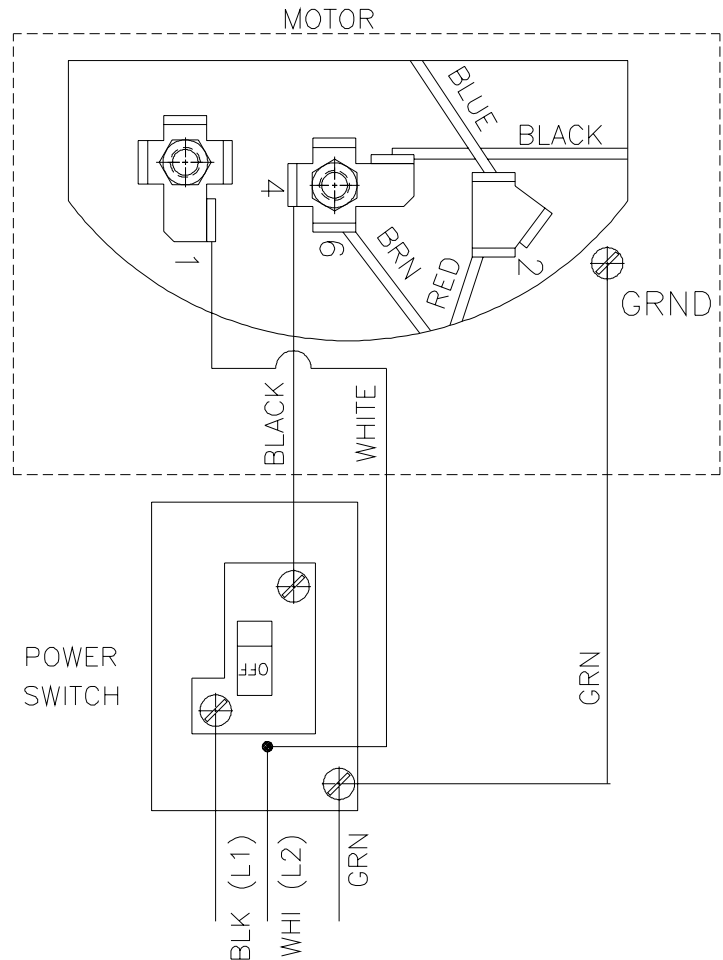
Wiring the TR500M
230VAC, 60 Hz
(738xx514)

Units built from 2005 to February 2009

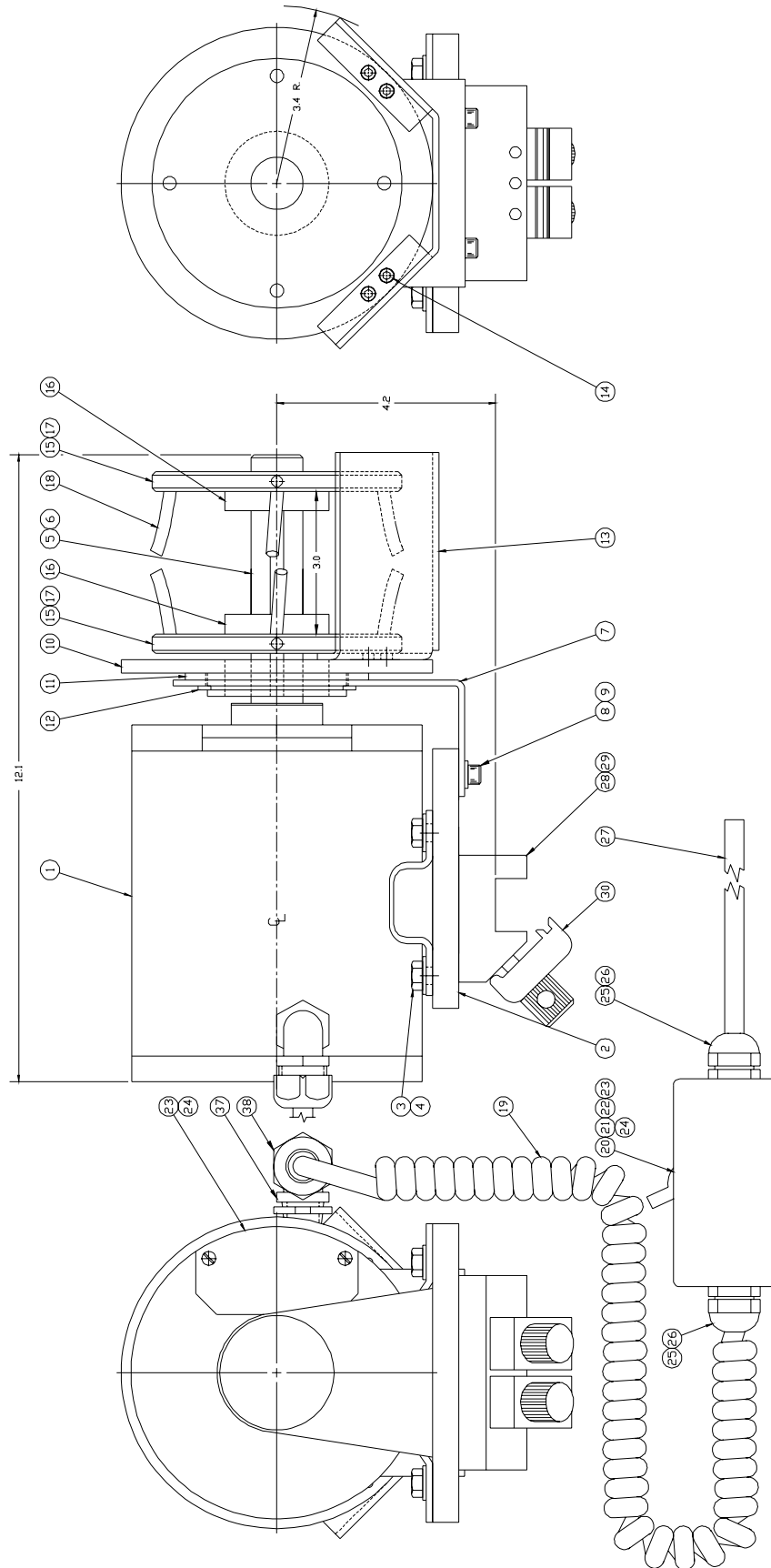
 This configuration is for 738xx514 units built from 2005 to February 2009



230VAC 60Hz counter clockwise rotation (shown).
 For clockwise rotation, switch internal motor leads Red to terminal 4, Black to terminal 2.



**TR500M 110
VAC, 50 Hz
(738xx515)**



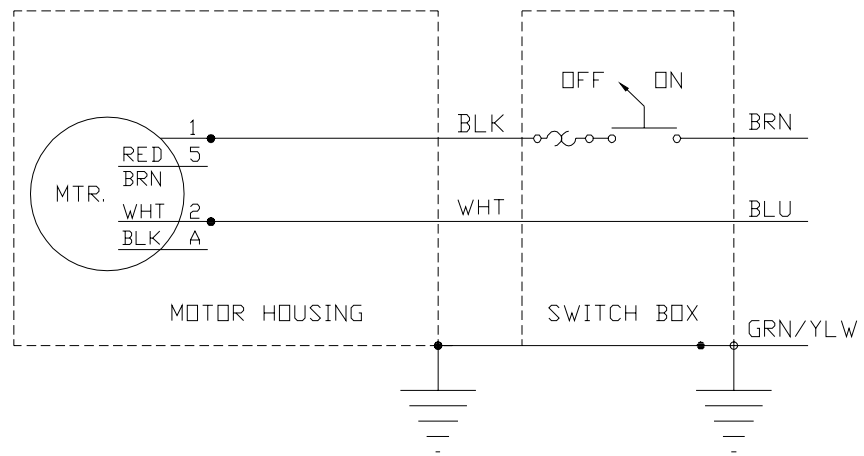
TR500M 110 VAC, 50 Hz
(738xx515) - continued

Item	Description	Part Number	Quantity
1	Motor	110xx248	1
2	Motor plate	580xx988	1
3	Flat washer	798xx760	4
4	Screw	798xx608	4
5	Shaft	791xx271	1
6	Screw	798xx312	2
7	Guard bracket	581xx443	1
8	Flat washer	798xx758	2
9	Screw	798xx568	2
10	Guard pivot	781xx182	1
11	Wave spring washer	784xx118	1
12	Retaining ring	793xx655	1
13	Guard	781xx183	1
14	Screw	798xx083	4
15	Wheel	788xx595	2
16	Screw	799xx236	2
17	Screw	798xx835	8
18	Polycord whip	781xx184	24
19	Coiled cord	030xx269	1
20	Manual starter	110xx180	1
21	Thermal unit	085xx214	1
22	Wire terminal	075xx257	1
23	Wire terminal, spade	075xx242	4
24	Wire terminal, ring	075xx070	3
25	Cord grip	066xx003	2
26	Locknut	066xx005	2
27	Power cable	034xx017	10
28	Base clamp	578xx507	1
29	Screw	798xx183	2
30	Clamp assembly	578xx543	6
31	Mounting base assembly	578xx527	1
32	Bracket bar	578xx517	1
33	Square bar	574xx072	1

TR500M 110 VAC, 50 Hz
(738xx515) - continued

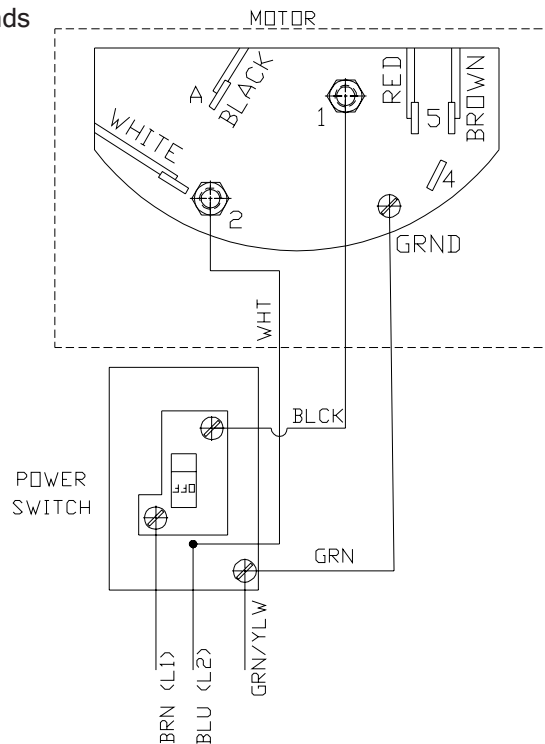
Item	Description	Part Number	Quantity
34	Right angle clamp	578xx575	1
35	Tool	578xx505	1
36	Plastic insert plug	794xx026	4
37	Strain relief	066xx029	1
38	Locknut	066xx083	1
39	Illustration drawing	999XD738-189	1

**Wiring the TR500M
110 VAC, 50 Hz
(738xx515)**

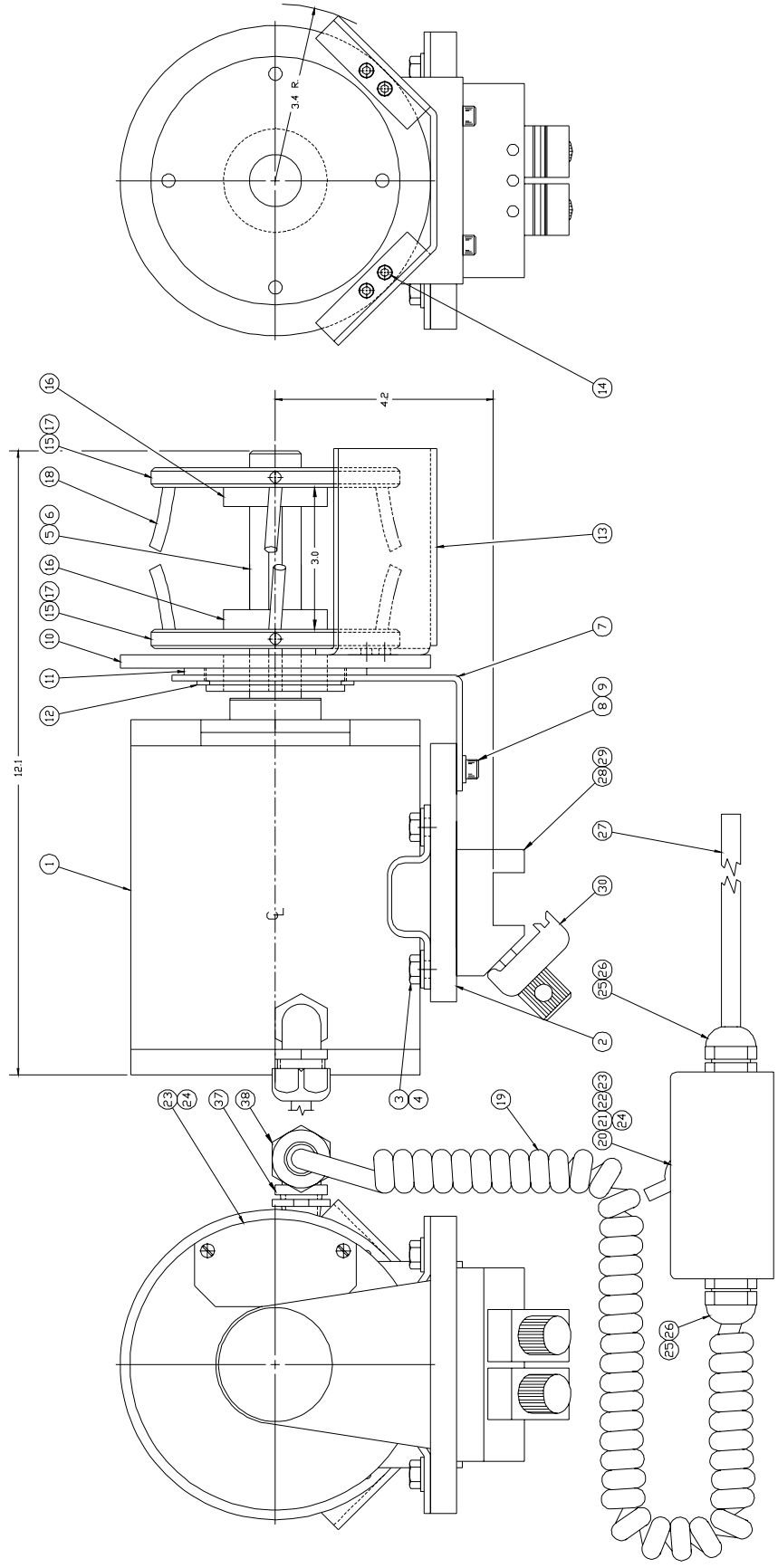


Counter clockwise rotation shown.

For clockwise rotation, switch internal motor leads
Black to terminal 5, Red to terminal A.



**TR500M 230
VAC, 50 Hz
(738xx516)**



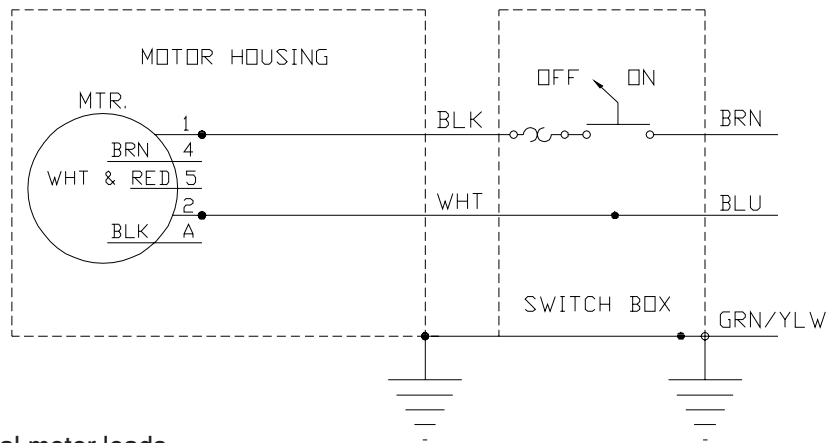
TR500M 230 VAC, 50 Hz
(738xx516) - continued

Item	Description	Part Number	Quantity
1	Motor	110xx248	1
2	Motor plate	580xx988	1
3	Flat washer	798xx760	4
4	Screw	798xx608	4
5	Shaft	791xx271	1
6	Screw	798xx312	2
7	Guard bracket	581xx443	1
8	Flat washer	798xx758	2
9	Screw	798xx568	2
10	Guard pivot	781xx182	1
11	Wave spring washer	784xx118	1
12	Retaining ring	793xx655	1
13	Guard	781xx183	1
14	Screw	798xx083	4
15	Wheel	788xx595	2
16	Screw	799xx236	2
17	Screw	798xx835	8
18	Polycord whip	781xx184	24
19	Coiled cord	030xx269	1
20	Manual starter	110xx180	1
21	Thermal unit	085xx256	1
22	Wire terminal, splice	075xx257	1
23	Wire terminal, spade	075xx242	4
24	Wire terminal, ring	075xx070	3
25	Cord grip	066xx003	2
26	Locknut	066xx005	2
27	Power cable	034xx017	10
28	Base clamp	578xx507	1
29	Screw	798xx183	2
30	Clamp assembly	578xx543	6
31	Mounting base assembly	578xx527	1
32	Bracket bar	578xx517	1
33	Square bar	574xx072	1
34	Right angle clamp	578xx575	1

TR500M 230 VAC, 50 Hz
(738xx516) - continued

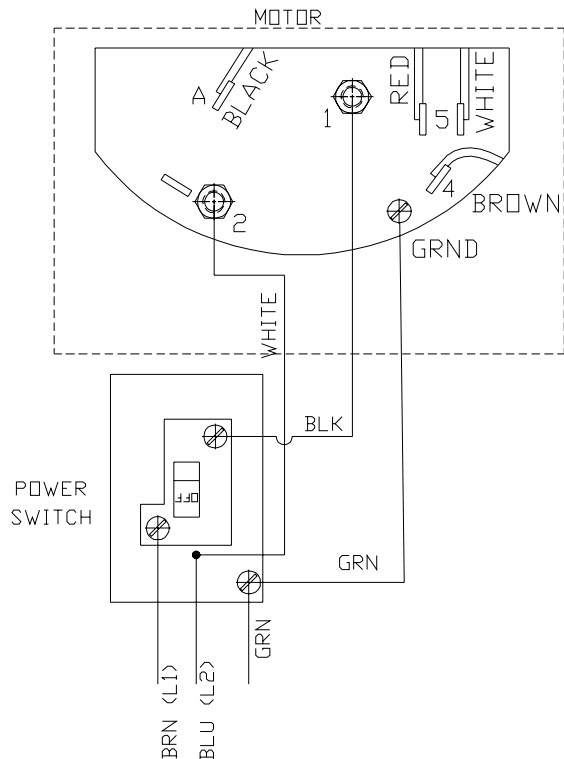
Item	Description	Part Number	Quantity
35	Tool	578xx505	1
36	Plastic insert plug	794xx026	4
37	Strain relief	066xx029	1
38	Locknut	066xx083	1
39	Illustration drawing	999XD738-189	1

**Wiring the TR500M
230 VAC, 50 Hz
(738xx516)**

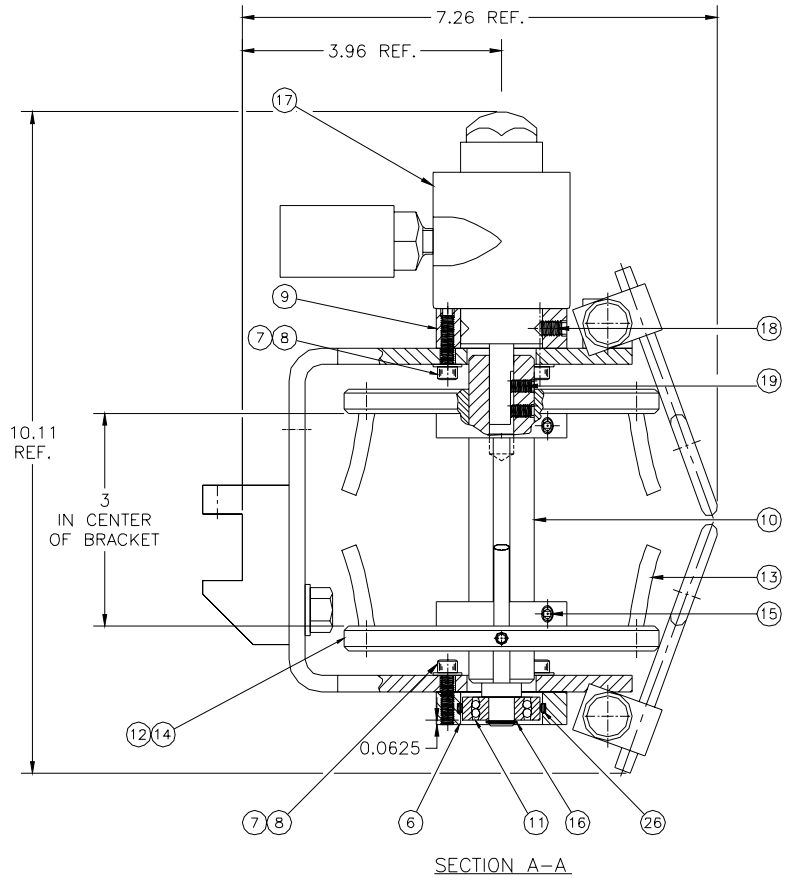


Counter clockwise rotation shown.

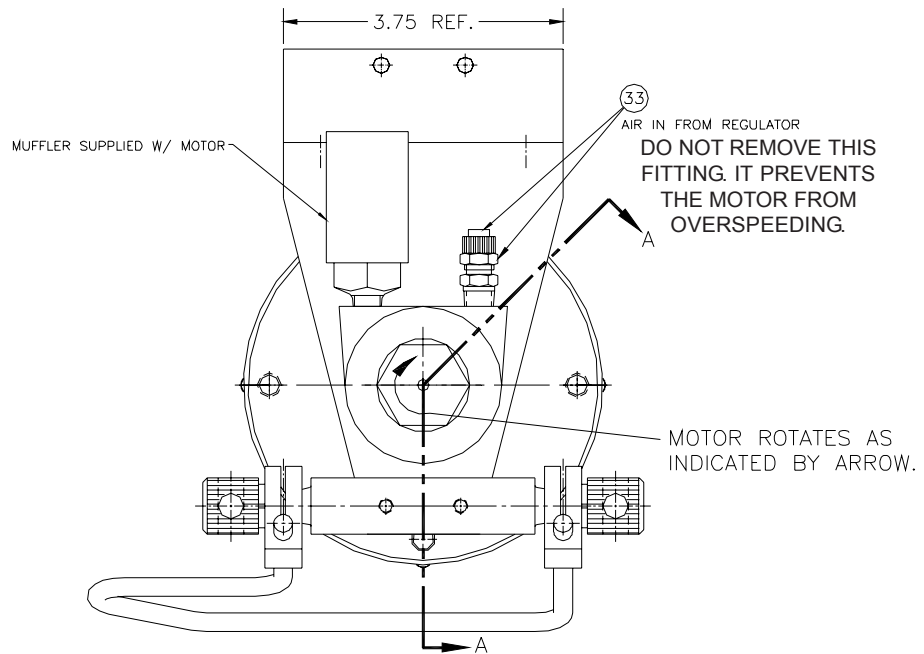
For clockwise rotation, switch internal motor leads
Red to terminal A, Black to terminal 5.



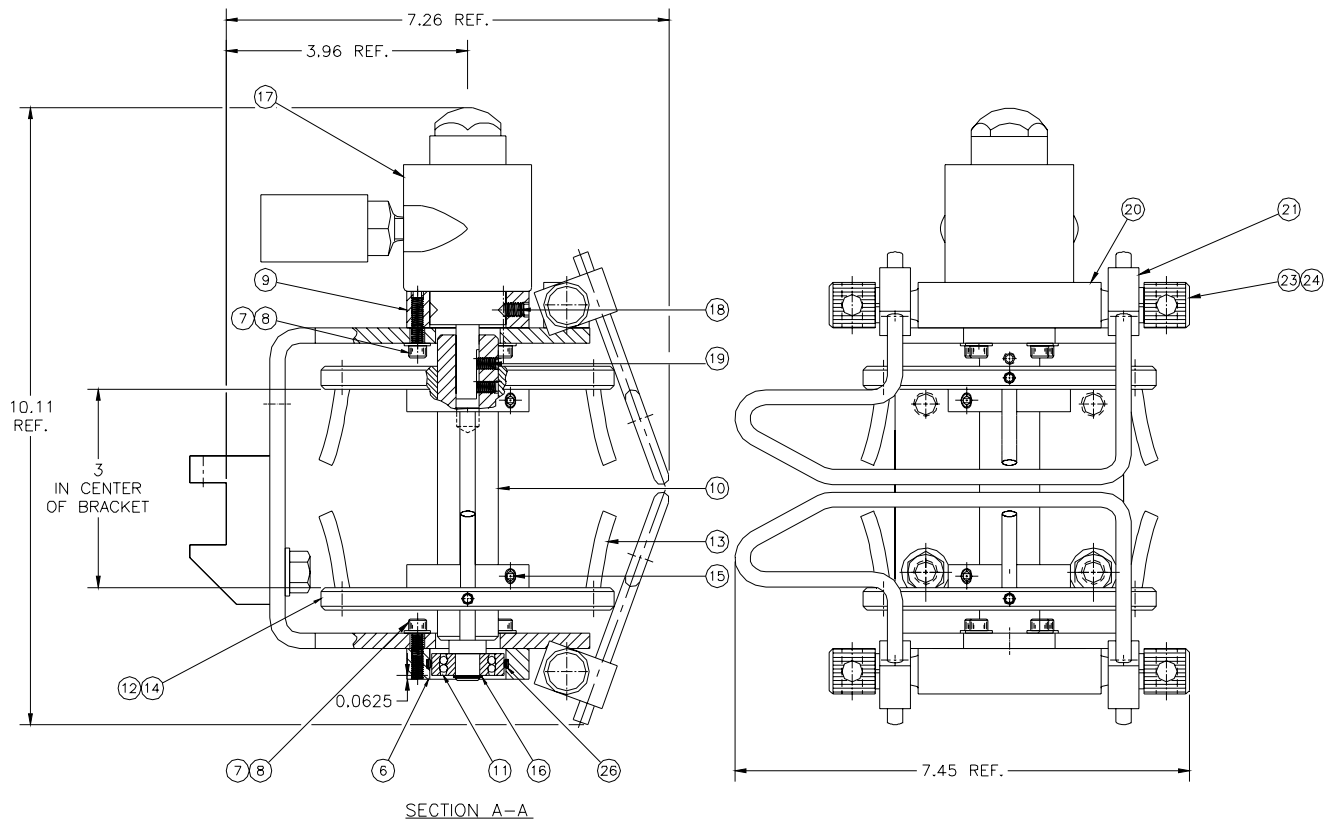
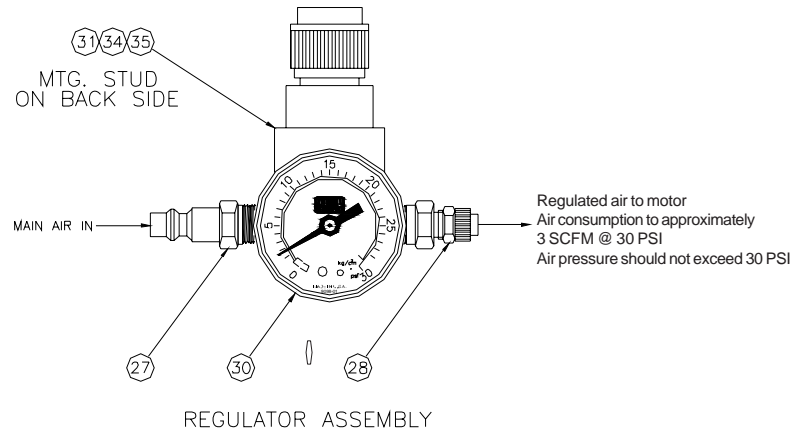
TR500M Pneumatic (Air) Tab Trim Remover (582xx586)



ITEMS 36 - 40 SUPPLIED AS MOUNTING KIT, NOT SHOWN



TR500M Pneumatic (Air) Tab Trim Remover (582xx586) - continued



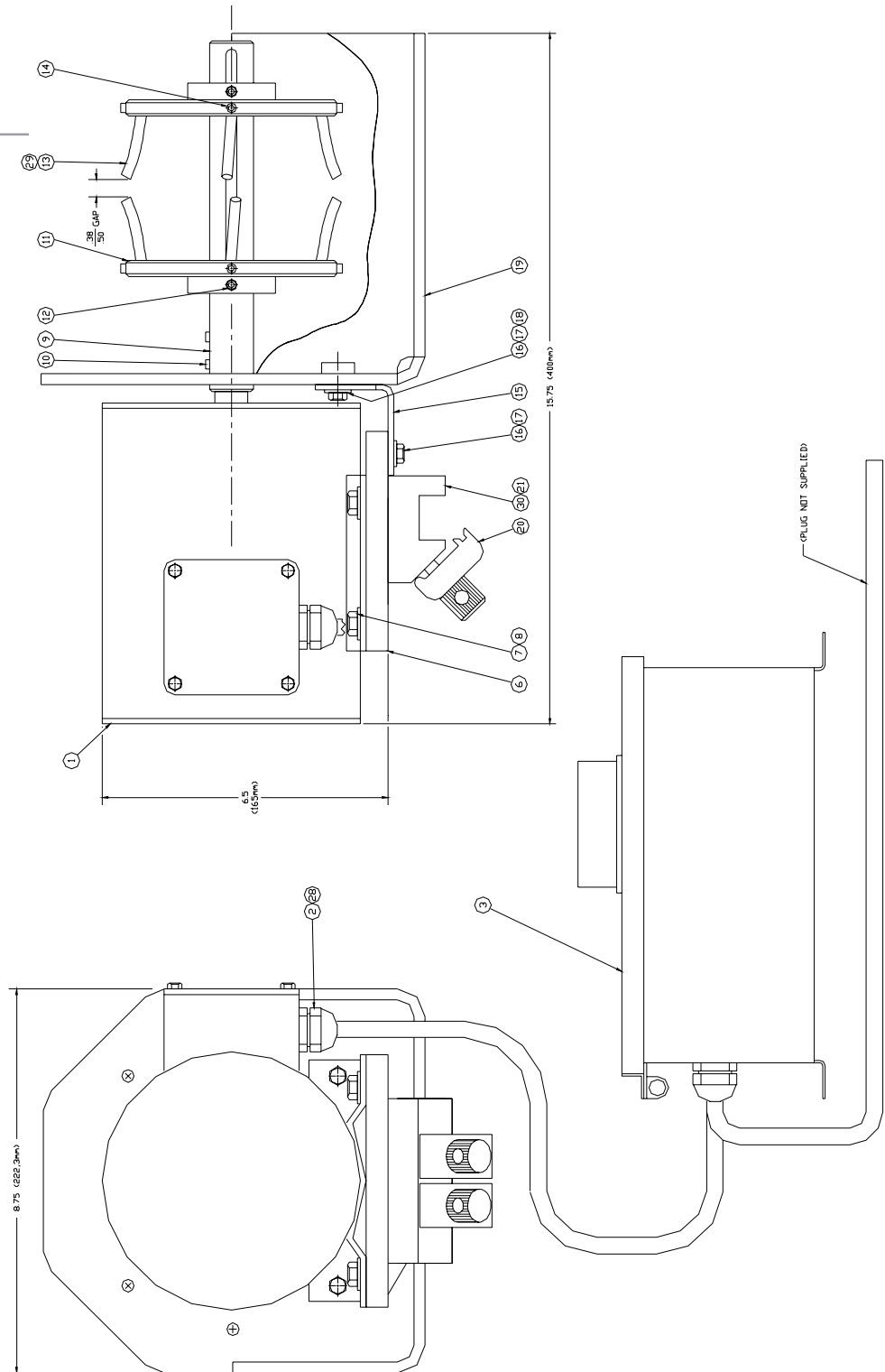
TR500M Pneumatic (Air) Tab Trim
Remover (582xx586) - continued

Item	Description	Part Number	Quantity
1	Bearing housing	582xx587	1
2	Base clamp	578xx507	1
3	Hex nut	784xx015	2
4	Lock washer	784xx569	2
5	Screw	784xx188	2
6	Bearing housing	582xx588	1
7	Screw	798xx047	12
8	Flat washer	784xx568	12
9	Collar	582xx589	1
10	Shaft	582xx590	1
11	Ball bearing	790xx179	1
12	Wheel	788xx595	2
13	Polycord whip	781xx184	24
14	Screw	798xx835	8
15	Screw	799xx236	2
16	Retaining ring	783xx113	1
17	Motor, air	561xx106	1
18	Screw	798xx162	2
19	Screw	784xx109	2
20	Mounting block, guide assy	582xx585	2
21	Clamp, pivot	579xx192	4
22	Guide assembly	582xx584	2
23	Screw	798xx995	4
24	Lock washer	798xx738	4
25	Clamp assembly	578xx543	6
26	O-ring	745xx320	1
27	Male quick disconnect	752xx004	1
28	Male connection	797xx324	1
30	Gauge	786xx003	1
31	Air regulator	594xx165	1
32	Tubing	755xx007	4
33	Male connection assy	582xx583	1
34	Mounting stud	580xx015	1
35	Nut, flange	798xx693	2

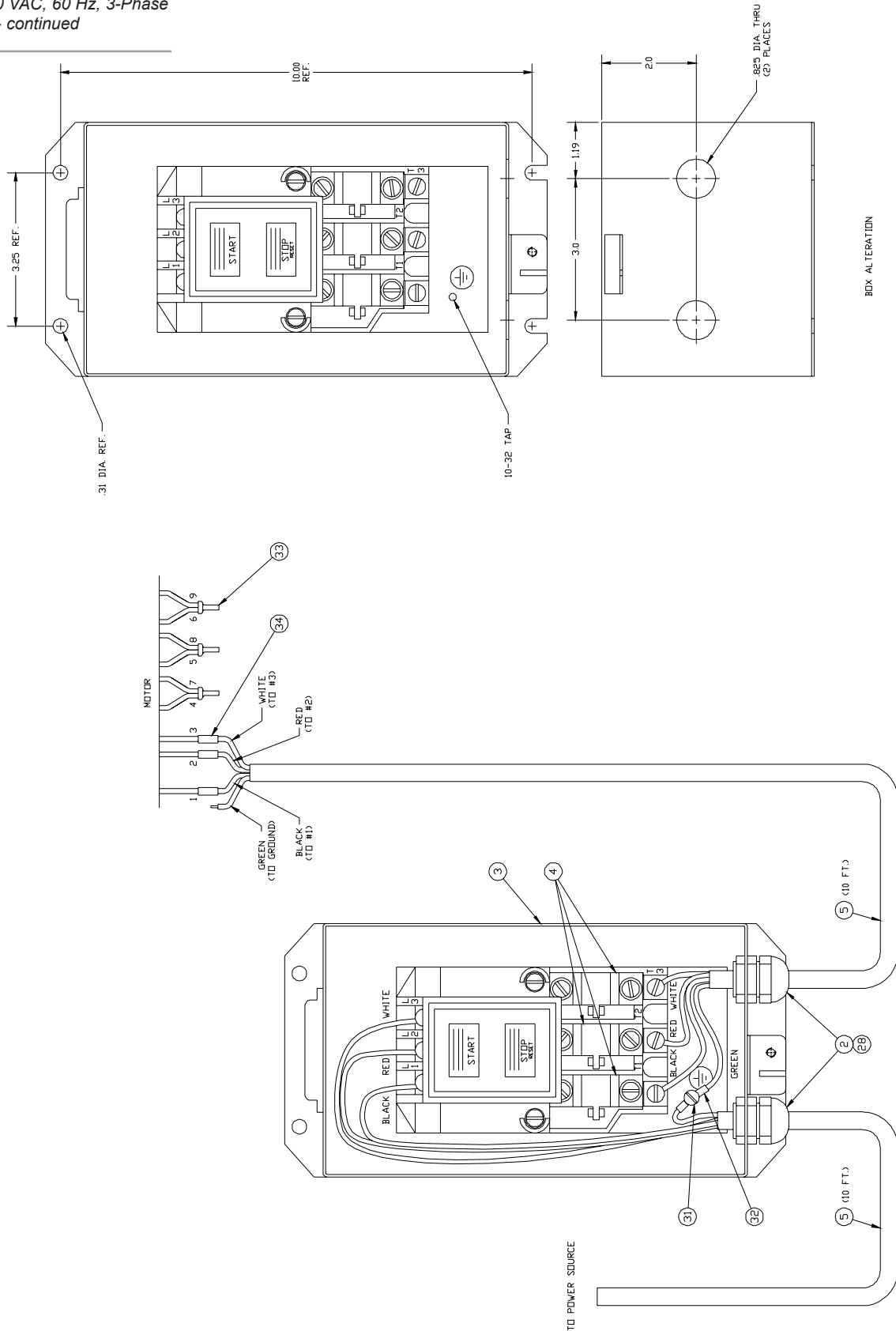
TR500M Pneumatic (Air) Tab Trim
Remover (582xx586) - continued

Item	Description	Part Number	Quantity
36	Mounting base assy	578xx527	1
37	Bracket bar	578xx517	1
38	Square bar	574xx072	1
39	Right angle clamp	578xx575	1
40	Tool	578xx505	1

**TR500M 480
VAC, 60 Hz, 3-
Phase
(738xx555)**



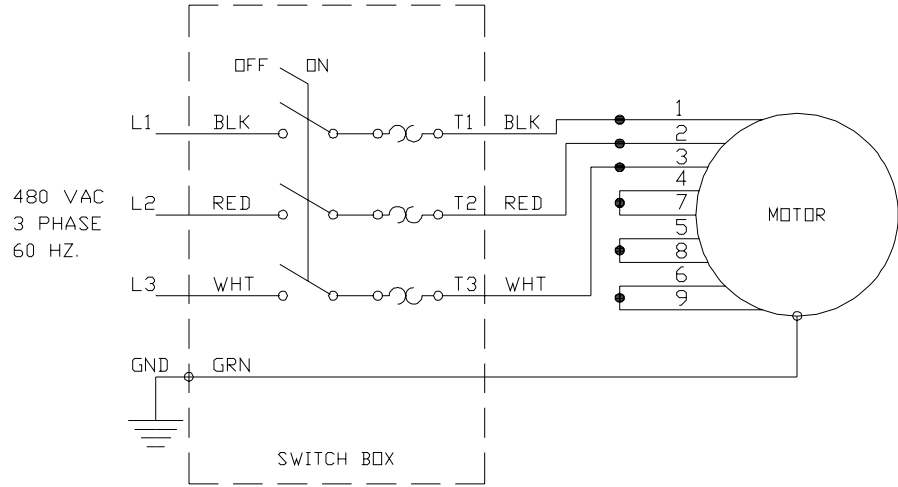
TR500M 480 VAC, 60 Hz, 3-Phase
(738x555) - continued



TR500M 480 VAC, 60 Hz, 3-Phase
(738xx555) - continued

Item	Description	Part Number	Quantity
1	Motor, 480VAC	110xx245	1
2	Cord grip	066xx003	3
3	Manual starter	110xx244	1
4	Thermal unit	110xx246	3
5	Power cable	034xx016	20
6	Motor plate	580xx988	1
7	Flat washer	798xx760	4
8	Screw	798xx608	4
9	Shaft	791xx182	1
10	Screw	798xx312	2
11	Wheel	788xx595	2
12	Screw	799xx236	2
13	Polycord	794xx805	8
14	Screw	798xx835	8
15	Bracket, guard	580xx989	1
16	Screw	798xx568	4
17	Lock washer	798xx735	4
18	Nut bar	580xx990	1
19	Guard	738xx408	1
20	Clamp assembly	578xx543	6
21	Screw	798xx183	2
22	Mounting base assy.	578xx527	1
23	Bracket bar	578xx517	1
24	Square bar	574xx072	1
25	Right angle clamp	578xx575	1
26	Tool	578xx505	1
27	Plastic insert plug	794xx026	6
28	Locknut	066xx005	3
29	Polycord	794xx806	1
30	Base clamp	578xx507	1
31	Screw	798xx411	1
32	Wire terminal, ring	075xx070	3
33	Splice, closed	061xx034	3
34	Wire terminal	075xx072	3

Wiring Diagram
TR500M 480 VAC, 60
Hz, 3-Phase
(738xx555)



Replacement Parts and Accessories

Fuses

Tab Trim Remover Model Number	Replacement Fuse Part Number
738xx513	085xx211
738xx514	085xx256
738xx515	085xx214
738xx516	085xx256

Polycord Whips

Polycord whips, package of 16 781xx186
 Polycord whips, package of 48 781xx187

Optional Product Guide

Optional Product Guide 579xx247

SECTION 9 - WARRANTY

General Warranty Information

Valco Cincinnati, Inc. warrants its equipment worldwide against defects in material and workmanship as outlined in this section.

Liability of the company is limited to repair of the product, or replacement of any part shown to be defective, and does not extend to defects caused by accidents, misuse, abuse, neglect, tampering or deterioration by corrosion. This warranty does not cover those items determined by Valco Cincinnati, Inc. to be normal wear items such as seals, O-rings, diaphragms, springs, etc.

Reconditioned equipment, unless specified otherwise at the time of purchase, will be warranted as described above for a period of ninety (90) days from the date of shipment by Valco Cincinnati.

Components purchased by Valco Cincinnati, Inc. from others for inclusion in its products are warranted only to the extent of the original manufacturer's warranty. In no event shall Valco Cincinnati, Inc. be liable for indirect or consequential damages arising out of the use of Valco Cincinnati products.

This warranty is conditioned upon the prepaid return of the equipment claimed to be defective to Valco Cincinnati, Inc. for examination and verification. If claimed defect is verified, repairs or replacements will be made F.O.B. Cincinnati, Ohio, U.S.A. or ex-works Telford, U.K. If the inspection of the equipment does *not* disclose any defect of workmanship or material, any necessary repairs will be made at a reasonable charge and return transportation will be charged.

This is the only authorized Valco Cincinnati, Inc. warranty and is in lieu of all other expressed or implied warranties, representations or any other obligations on the part of Valco Cincinnati, Inc.

Cold Glue Equipment and Electronic Controls

The warranty for cold glue equipment and electronic controls is for a period of one (1) year from the date of shipment by Valco Cincinnati.

Hot-Melt Units, Hoses, Valves, Guns, and Related Equipment

All hot melt components except cast-in heating elements are warranted for a period of six (6) months from the date of shipment by Valco Cincinnati. Cast-in heaters carry an additional, pro-rated warranty not to exceed three (3) years from the date of shipment by Valco Cincinnati.

SECTION 10 - SERVICE

If you have problems with your system, please contact your Valco representative. If your need is urgent, we encourage you to contact our corporate office in Cincinnati, Ohio, U.S.A. at (513) 874-6550. If the problem cannot be resolved, Valco will promptly arrange to have a technical representative visit your facility. Any charges for a service call will be quoted at that time. Any part that fails during the warranty period shall be returned prepaid to Valco Cincinnati, Inc. by the customer for disposition.



Upon request, ValcoMelton technical service personnel are available to repair or replace parts under warranty at the customer's facility. Charges for this service include travel time and expenses.

If an equipment problem is the result of customer abuse, improper installation or operation, all travel time, labor, parts, and expenses will be charged to the customer.

If the responsibility for a problem cannot be absolutely determined, the customer will be charged for travel time and expenses only. No charge will be made for parts and labor.