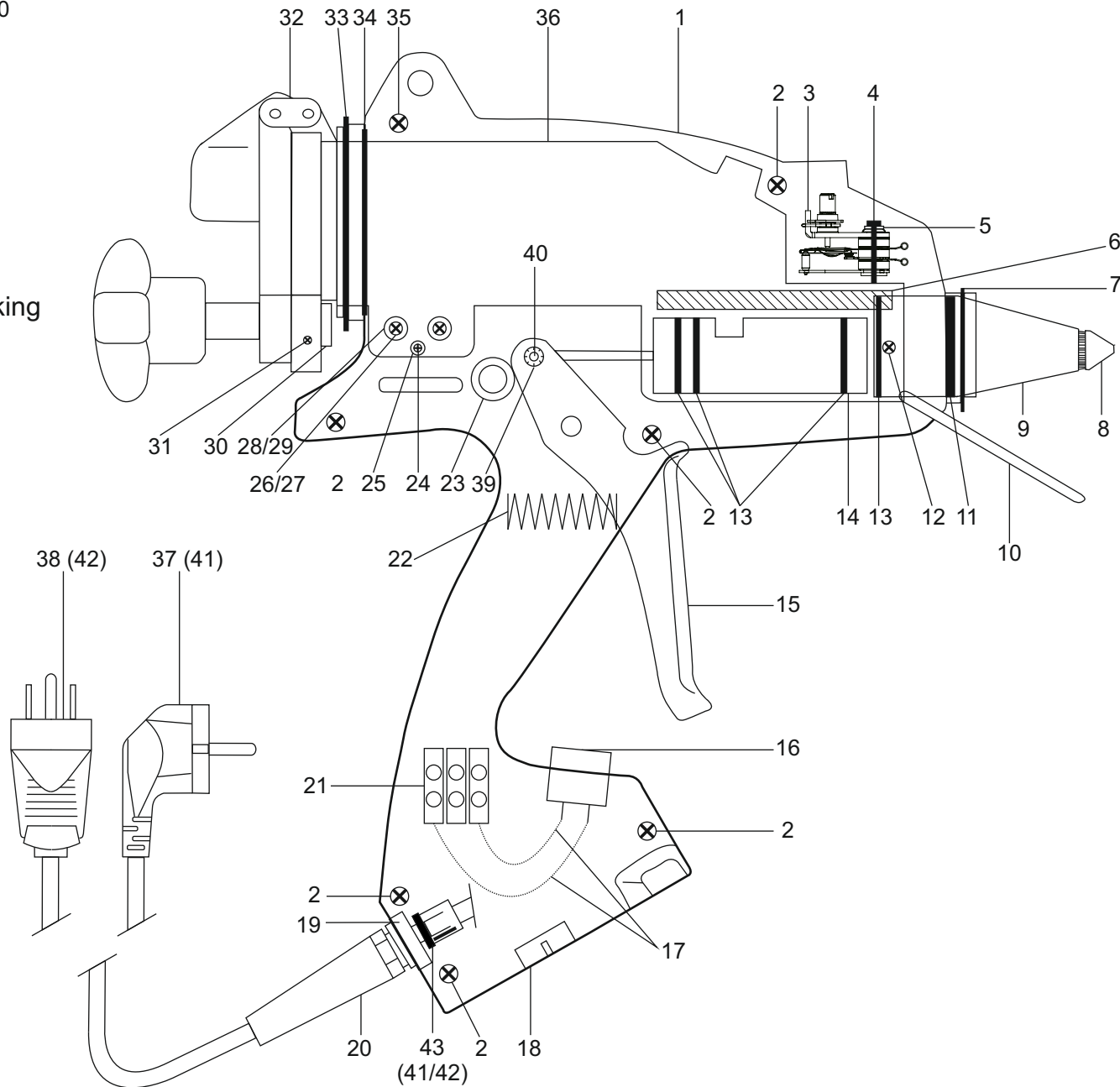


No.	Art.No	Name of article
1	2977	Nozzle 2,0mm
2	3345	Wire Stand MS 200
3	3436	Lid MS 200 cpl. (incl. O-Ring 40x3 / 2603)
4	3438	Locking MS 200 cpl.
5	2603	O-Ring 40x3
	3442	Wear & Tear Set MS 200 (2 x Nozzle 2,0mm, 5 x O-Ring 40x3)

Detail Lid

Detail Locking



No.	Art.No.	Name of article
1	3432	Casing MS 200
2	3423	Screw/Housing 3,5x16
3	3601	Thermostat MS80
4	2532	Screw M4x25/Thermostat
5	3159	Tooth lock washer
6	3495	Heater 230V MS200 Spare Part
6	3494	Heater 120V MS200 Spare Part
7	3354	Ring A 30
8	2977	Nozzle M 14 cpl.pneum./ID 2.0
9	3385	Exit Piece MS 200
10	3345	Wire Stand MS 200
11	3387	O-Ring 23x3 MS200
12	3013	Screw M 4x10
13	3791	O-Ring MS80/150
14	3762	Piston MS80/150 cpl.
15	3939	Trigger MS80/200 cpl.
16	3415	Switch on/off
17	3446	Wire for Pushbutton
18	3433	Magnet MS 200
19	3360	Nut Antikink MS 200
20	3359	Antikink MS 200
21	2622	Terminal block
22	3790	Pressure Spring MS150
23	3353	Stroke Arrester
24	2837	Earth cable
25	3424	Thermal fuse
26	3381	Screw 3,5x25 fillister head
27	3382	Washer 4,3
28	3873	Rivet MS80
29	3864	Insulation Bush PTFE MS80/62
30	2884	Lock Nut for Lid Release
31	2911	Cover safety screw
32	2617	Hinge link
33	3355	Ring A 58/
34	2947	O-Ring SB-H 52x2,5
35	3363	Screw M3,9x16
36	3475	Melting Block MS 200
37	3783	Calbe / Plug type E+F (230V)
38	3886	Cable / Plug type B (120V)
39	3818	Ring MS 80/200
40	3802	Rivet 3 x 16 MS 80
41	2661	Module Cable/Switch (230V) (incl. Pos. 16+17+19+20+37+43)
42	2659	Module Cable/Switch (120V) (incl. Pos. 16+17+19+20+38+43)
43	2703	Cord grip

No.	Art.No.	Name of article
1	3367	Lid MS 200
2	2617	Hinge link
3	2603	O-Ring 40 x 3
4	2820	Spacer
5	2819	Plate
6	2800	Disc
7	2801	Screw M6 x 16
8	2884	Lock Nut for Lid Release
9	2911	Cover safety screw
10	3434	Threaded Bolt .2
11	2885	Spacer bush
12	2718	Spring
13	3665	Lock nut M 8
14	2613	Star Grip
15	3438	Locking MS 200
16	3436	Lid MS 200 complete

Detail Lid

Detail Locking

