

# **PFRM5 MANUAL**

**(Pump-Filter-Regulator-Manifold Assembly)**

**Manual Number: MS014**  
**Release Date: 10/2020**

©2020 Valco Cincinnati, Inc. All Rights Reserved.

This manual is furnished with the PFRM5 and may be used or copied only in accordance with the terms of purchase.

No part of this manual may be reproduced, stored in a retrieval system, or transmitted, in any form or by any means, electronic, mechanical, recording, or otherwise, without the prior written permission of Valco Cincinnati, Inc. The information in this manual is furnished for educational purposes only, is subject to change without notice, and should not be construed as a commitment by Valco Cincinnati, Inc.

This manual was written and designed at Valco Cincinnati, Inc., 411 Circle Freeway Drive, Cincinnati, Ohio 45246.

Part Number: MS014

Printed in the USA

**Valco Cincinnati, Inc.**

497 Circle Freeway Drive  
Suite 490

Cincinnati, OH 45246

Tel: (513) 874-6550

Fax: (513) 874-3612

Email: [sales@valcomelton.com](mailto:sales@valcomelton.com)

Web: <http://www.valcocincinnatiinc.com>

**Valco Cincinnati Limited**

Hortonwood 32

Telford, TFI 7YN, England

Tel: (+44) 1952-677911

Fax: (+44) 1952-677945

Email: [sales@valco.co.uk](mailto:sales@valco.co.uk)

Web: <http://www.valco.co.uk>

**Valco Cincinnati GmbH**

Bonnerstrasse 349

40589 Dusseldorf-Benrath, Germany

Tel: +49 211 984 798-0

Fax: +49 211 984 798-20

**Melton S.L.U.**

Pol. Industrial Agustinos

calle G, n. 34

31160 Orcoyen, Navarra, Spain

Tel: (34) 948-321-580

Fax: (34) 948-326-584

**Valco Melton France**

Technoparc des Hautes Faventines

32 Rue Jean Bertin

26000 Valence

Tel: +33 (0)4 75 78 13 73

Fax: +33 (0)4 75 55 74 20



**PFRM5 Assemblies** (see drawing on front) ..... 561xx234

1 Pipe Plug, 3/8	799xx854
2 Pipe Plug, 1/2	799xx855
3 Air Cylinder Assembly	561xx255
3A Spool Valve	769xx664
5 Regulator Cylinder	561xx248
6 Air Cylinder, 3.0 dia x 1.0 stroke	782xx393
8 Filter Cap	561xx245
9 Filter End Cap	593xx081
10 Regulator Cap	561xx250
11 Pump Tube	561xx241
12 Lower Check	561xx242
13 Piston	561xx244
14 Piston Check Seat	561xx243
15 Manifold, Fluid Handling	561xx237
16 Seal Retaining Plate	561xx238
19 Seal Cartridge with Shaft	561xx254
20 Ball, 1/2 dia	561xx246
21 Ball, 5/8 dia	561xx247
22 Piston Seal	746xx228
23 Dowel Pin, 1/8 dia x 1 lg	884xx298
24 O-Ring	746xx124
25 O-Ring	745xx088
27 Filter Screen	593xx020
28 O-Ring	745xx059
31 Ball Seat Check Assembly	593xx538
32 Activator Pin	593xx050
33 Rolling Diaphragm	746xx226
34 Piston	561xx249
36 Fitting, Elbow, 3/8 NPT x 8mm	799xx786
37 Shut-Off Valve	792xx474
38 Bushing, 3/8 NPT x 1/4 NPT	797xx047
39 Nipple, 1/4 x 1-1/2 lg	797xx085
40 Fitting, Elbow, 1/4 x 5/16"	799xx821
41 SHCS, M6 x 20 SS	784xx426
42 SHCS, M6 x 120 SS	784xx576
43 SHCS, M8 x 70 SS	884xx279
44 SHCS, M6 x 12 SS	798xx069
45 SHCS, M6 x 90 SS	884xx234
46 Adhesive Transfer Tape	781xx818
47 O-Ring	745xx122
48 Vent Silencer, 3/8 NPT	782xx392
55 Spring	783xx373
56 Label	781xx780
57 Label	782xx730

**TECHNICAL DATA**

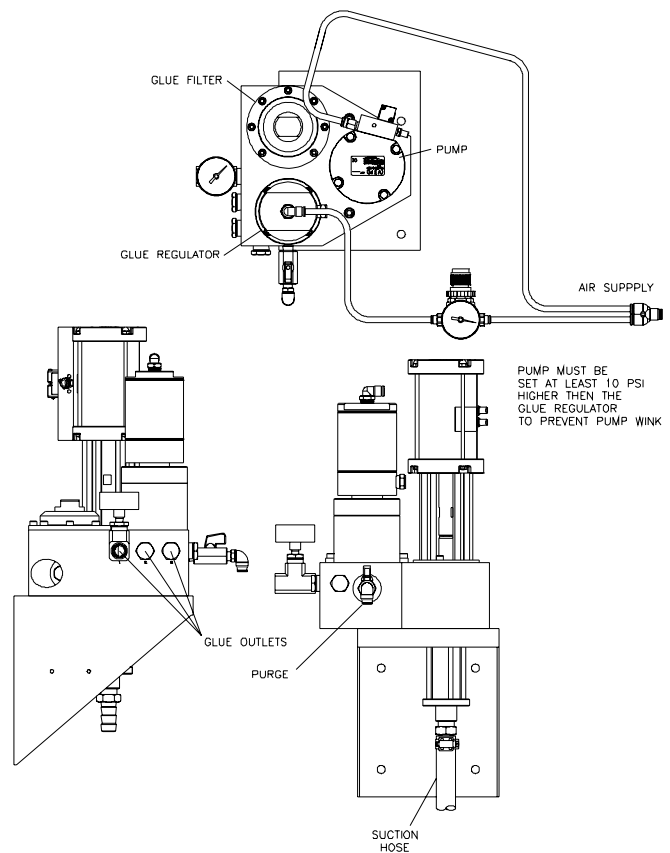
Max Cycles per Minute	20 (580mL/min)
Height	18.9" [480mm]
Applied Air Pressure	60-80psi
Max Outlet Fluid Pressure	400psi

Wall Mounting Support Equipment Kit	561xx235
Pail Mounting Support Equipment Kit	561xx236
Drum Mounting Support Equipment Kit	561xx291
PFRM5 Rebuild Kit	561xx259
Air Cylinder Repair Kit	561xx305
3.5 to 1 Regulator Kit	561xx260
2.0 to 1 Regulator Kit	561xx261

**PFRM5 Rebuild Kit - 561xx259**

19 Seal Cartridge with Shaft	561xx254
20 Ball, 1/2 dia	561xx246
21 Ball, 5/8 dia	561xx247
22 Piston Seal	746xx228
23 Dowel Pin	884xx298
24 O-Ring	746xx124
25 O-Ring	745xx088
28 O-Ring	745xx059
31 Ball Seat Check Assembly	593xx538
32 Activator Pin	593xx050
33 Rolling Diaphragm	746xx226
46 Adhesive Transfer Tape	781xx821
47 O-Ring	745xx122
55 Spring	783xx373

**Pump Setup**



Design specifications subject to change without notice. © Valco Cincinnati Inc. All Rights Reserved.  
DS095 Pump/Filter/Regulator/Manifold Assembly (PFRM5) 1/2021

Valco Cincinnati Incorporated  
411 Circle Freeway Drive  
Cincinnati, Ohio 45246, USA  
TEL: (1) 513-874-6550  
FAX: (1) 513-874-3612

**Melton S.L.U.**  
Pol. Industrial Agustinos  
calle G, n. 34  
31160 Orcoyen, Navarra, Spain  
TEL: (34) 948-321-580  
FAX: (34) 948-326-584

Valco Cincinnati, Ltd.  
Unit 7-8  
Hortonwood 32  
Telford TF1 7YN England  
TEL: (44) 1952-677911  
FAX: (44) 1952-677945

Valco Cincinnati GmbH  
Bonnerstrasse 349  
40589 Dusseldorf-Benrath,  
Germany  
Tel: +49 211 984 798-0  
Fax: +49 211 984 798-20

**Valco Melton France**  
Technoparc des Hautes Faventines  
32 Rue Jean Bertin  
26000 Valence  
Tel: +33 (0)4 75 78 13 73  
Fax: +33 (0)4 75 55 74 20

# Declaration of Conformity

(According to EN 45014)



The following declaration is issued under the sole responsibility of the manufacturer:

**Manufacturer:**

Valco Melton  
A division of Valco  
Cincinnati, Incorporated  
411 Circle Freeway Drive  
Cincinnati, OH 45246  
USA

**Authorized Representatives in Europe:**

Valco Cincinnati, Ltd.  
Unit 7-8  
Hortonwood 32  
Telford TF1 7YN  
England

Melton S.L.U.  
Pol. Industrial  
Agustinos  
calle G, n. 34  
31160 Orcoyen  
Navarra, Spain

*declares that the product:*

**Product Name:**

PFRM5 Manual

complies with the following Council Directives:

**Safety of Machinery:**

2006/42/EC

**Low Voltage Equipment:**

2014/35/EU

**EMC:**

2014/30/EU

**Reduction of Hazardous Substances (RoHS)**

2011/65/EC

*and conforms to the following standards:*

**Safety:**

EN60204-1:2006  
EN13849-1

**Risk:**

ISO12100:2010

**EMC Emissions:**

EN61000-6-4:2007  
EN61000-4-2

**EMC Immunity:**

EN61000-6-2:2005  
EN61000-4-3  
EN61000-4-4  
EN61000-4-5  
EN61000-4-6  
EN61000-4-8  
EN61000-4-11

**Place and Date:**

Cincinnati, Ohio USA  
CE Mark first fixed 2006

**Signature:**

Cincinnati, OH USA  
David H. Swedes,  
Vice President of  
Engineering & Manufacturing

This Declaration of Conformity has been generated electronically and is legally binding without signature



---

# TABLE OF CONTENTS

---

<b>Section 1 - Introduction</b> .....	<b>1-1</b>
<b>Section 2 - Safety and Use</b> .....	<b>2-1</b>
<i>Read Thoroughly Before Handling Equipment</i> .....	2-1
<i>Symbols</i> .....	2-1
<i>Owner Responsibilities</i> .....	2-3
<i>Limitations of Use</i> .....	2-4
<i>Installation/Startup/Use Safety Information</i> .....	2-4
<i>Shut Down Safety Information</i> .....	2-5
<i>Hot-Melt-Specific, General Safety Information</i> .....	2-6
What to Do if Contact with Hot Adhesive Occurs .....	2-7
What to Do if Inhalation of Adhesive Fumes Occurs .....	2-7
What to Do if Adhesive-Related Fire or Explosion Occurs .....	2-8
<i>Hose Safety Information</i> .....	2-9
<b>Section 3 - Specifications</b> .....	<b>3-1</b>
<b>Section 4 - Operation</b> .....	<b>4-1</b>
<i>Operating the Pump</i> .....	4-1
<b>Section 5 - Maintenance</b> .....	<b>5-1</b>
<i>PFRM5 Rebuild Kit</i>	
<i>Parts Replacement</i> .....	5-1
Disassembly .....	5-1
Reassembly .....	5-2
<i>Installing the Pump</i> .....	5-7
<b>Section 6 - Part Number List</b> .....	<b>6-1</b>
<i>How to Order Parts</i> .....	6-1
<i>PFRM5 (561xx234)</i> .....	6-2
<i>Kits</i> .....	6-4
<b>Section 7 - Warranty</b> .....	<b>7-1</b>
<i>Warranty Information</i> .....	7-1
Cold Glue Equipment and Electronic Controls .....	7-1
Hot Melt Units, Hoses, Valves, Guns, and Related Equipment ...	7-1
<b>Section 8 - Service</b> .....	<b>8-1</b>

---

# SECTION 1 - INTRODUCTION

---

The Pump/Filter/Regulator/Manifold Assembly (**PFRM5**) is an all-in-one Pump Combo. It consists of a 7:1 Pump, Filter, a 5:1 Regulator and a four (4) port Manifold. The **PFRM5** includes Valco's Balancing Regulator Technology, and can be used with up to four valves.

The **PFRM5** comes completely assembled, requiring only air and glue hose hook-up. The **PFRM5** also includes a Seal/Shaft Cartridge Assembly, allowing quick and easy rebuilds.

---

# SECTION 2 - SAFETY AND USE

---

---

## Read Thoroughly Before Handling Equipment

---

### WARNING!



Read and follow all safety precautions, warnings, cautions, and other recommendations in this manual. OTHERWISE, DEATH, PERSONAL INJURY OR EQUIPMENT DAMAGE COULD OCCUR.

Read this entire section before handling the equipment.

---

## Symbols

---

The following symbols may be used on the equipment and/or in this manual.



This symbol represents a **Caution** or a **Warning**. *Cautions* draw special attention to anything that could damage equipment or cause the loss of data. *Warnings* draw special attention to anything that could injure or kill the reader. Both Cautions and Warnings are placed before the step they apply to.



This symbol represents a **Hot Surface**.



This symbol represents a **Puncture Risk**. It is usually used in regard to nozzle cleaning appliances and other sharp instruments that can cause puncture wounds and risk exposure to bloodborne pathogens and other debris.



This symbol means that **Working Gloves** are required.



This symbol means that **Goggles** are required.



This symbol indicates a **Shock Hazard**. There is a presence of non-insulated dangerous voltage within the product's enclosure. This voltage may cause electrical shock or fire.

Continued next page



---

Symbols - Continued

---



This symbol indicates the need to **Unplug/Disconnect All Power Sources** and to let them de-energize before attempting any type of work or maintenance. Remember that there can still be energy in equipment, cords, and wires even when unplugged/disconnected.



This symbol indicates the need to **Lock Out All Power Sources** and to let them de-energize before attempting any type of work or maintenance. If power is not locked out, the person working on the equipment may be injured or killed if someone unknowingly switches on the power to the equipment.



This symbol indicates a **Note**. Notes point out something of special interest or importance to the reader. They give tips, hints, and information in addition to what is necessary for the step preceding it.

---

## Owner Responsibilities

---

The owner of the equipment is under obligation to manage all safety information. Some examples include:

- Examine all safety materials and documents as well as jurisdictional laws and make certain all laws, recommendations, and other safety/hazard laws, certification requirements, training, and instructions are followed and kept current.
- Maintain all safety materials including tags, labels, documents, and MSDS information. Make certain they are distinct and can be read/understood. Replace any that are dirty, worn, or unreadable.
- Make sure all personnel who will handle, install, maintain, operate, fix, and work around the equipment have ready access to the safety information, training, and equipment according to jurisdictional authorities.

The owner of the equipment is under obligation to make certain that all instructions, requirements, and jurisdictional laws are met. Some examples include:

- Make sure there are regular inspections of equipment and safety devices.
- Have regular safety drills and inspections supervised by the proper authorities.
- Provide all required safety items, first aid equipment, and training.

The owner of the equipment is under obligation to make certain that all personnel who will handle, install, maintain, operate, fix, and work around the equipment are qualified, trained, and up-to-date with all information regarding the equipment. Some examples include:

- Make sure all personnel have the proper safety training, equipment, education, and abilities necessary for the job function according to safety instructions and all jurisdictional laws and regulations.
- It is strongly advised that personnel receive first-responder medical care training in case of burns, medical emergencies, or other injuries. Training should be kept up to date.
- Make sure all personnel understand and can follow safety policies and procedures for the organization as well as for the specific equipment.
- Make sure that all personnel are consistently trained, evaluated, free of alcohol and medications that may impair judgment and reflexes, and are tested for banned substances according to jurisdictional authorities.

## Limitations of Use

Read this document and all information regarding the equipment before handling the equipment. The intended use of the equipment is stated in Section 1 of this manual.

Do not use this equipment for anything other than its intended use. Do not modify, change, or alter the equipment in any way. If you are unsure of the intended use and the limitations of use for the equipment, contact your Valco Melton Representative before handling the equipment.

## Installation/ Startup/Use Safety Information

Valco Melton hot melt units, cold glue units, controllers, inspection systems and all related accessories have the following universal safety precautions (this is not intended to be an exhaustive list; follow all instructions and safety precautions for the specific type of equipment involved):

**WARNING!**



Only qualified personnel should install the equipment. Valco Melton strongly recommends that a Valco Melton Technician install all equipment. OTHERWISE, DEATH, PERSONAL INJURY, OR DAMAGE TO EQUIPMENT COULD OCCUR.

**WARNING!**



The equipment should be installed so that it can be turned off at a location **away** from the equipment in case of injury, electrical problems, or malfunction. OTHERWISE, DEATH OR PERSONAL INJURY COULD OCCUR.

**WARNING!**



Properly route all electrical wires. Never tamper with equipment. Only use approved and correct voltage, type of current, fuses, and other power supplies. Replace worn cords, hoses, etc. immediately. FAILURE TO OBSERVE WARNING MAY RESULT IN DEATH, PERSONAL INJURY, AND/OR EQUIPMENT DAMAGE.

**WARNING!**



Poor ventilation, smoking, and open flames can cause overheated hot melt to ignite. Adequate ventilation must be provided. Smoking should be prohibited in the immediate vicinity of the molten adhesive. Open flames must be kept away from the area around molten adhesive. OTHERWISE, DEATH, PERSONAL INJURY, OR DAMAGE TO EQUIPMENT COULD OCCUR.

**WARNING!**



Never use any Valco Melton equipment in an explosive environment. Explosive environments include, but are not limited to, solvent-based cleaners or adhesives, explosive materials, radioactive materials, etc. OTHERWISE, DEATH OR PERSONAL INJURY COULD OCCUR.

**WARNING!**



Equipment will start automatically when remotely controlled by triggering devices. Be sure to disable all triggering devices, carefully release hydraulic pressure, and disconnect air pressure before servicing or working near guns, valves, and other triggered devices. OTHERWISE, DEATH OR PERSONAL INJURY COULD OCCUR.

## Shut Down Safety Information

Valco Melton hot melt units, cold glue units, controllers, inspection systems and all related accessories have the following universal safety precautions (this is not intended to be an exhaustive list; follow all instructions and safety precautions for the specific type of equipment involved):

### WARNING!



Purge the fluid pressure and the air pressure from the system before disconnecting/disabling any part of the system. OTHERWISE, DEATH OR PERSONAL INJURY COULD OCCUR.

### WARNING!



Disconnect and lock out all power before maintenance or other need to open the equipment. Only qualified personnel should open and service the control. OTHERWISE, DEATH OR PERSONAL INJURY COULD OCCUR.

### WARNING!



Equipment may still be energized even if unplugged! When making adjustments or performing checkout procedures, stay clear of any moving mechanical parts and do not touch exposed electrical equipment or electrical connectors. OTHERWISE, DEATH OR PERSONAL INJURY COULD OCCUR.

### WARNING!



Disconnect/disable all mechanical and/or electrical devices that send activation signals to the gun(s), valve(s), melter pump(s), etc. This includes pattern controls, timers, input/output signals, etc. Only qualified personnel should open and service the control. OTHERWISE, DEATH OR PERSONAL INJURY COULD OCCUR.

### WARNING!



Disable all triggering devices, relieve all residual pressure (hydraulic and air) and allow adhesive to cool before attempting to disconnect guns, hoses, valves, etc. Only qualified personnel should open and service the control. OTHERWISE, DEATH OR PERSONAL INJURY COULD OCCUR.

### WARNING!



Never point an adhesive dispensing gun, valve, hose, air hose, or anything else at yourself or another person. OTHERWISE, DEATH OR PERSONAL INJURY COULD OCCUR.

## Hot-Melt-Specific, General Safety Information

Valco Melton hot melt units have the following universal safety precautions **in addition to all other universal precautions previously mentioned** (this is not intended to be an exhaustive list; follow all instructions and safety precautions for the specific type of equipment involved):

**WARNING!**



**Never** process any polyurethane reactive (PUR) hot melt or solvent-based material in a Valco Melton unit unless you are certain that the unit is compatible and is marked "PUR"! Read all instructions and MSDS sheets carefully, following manufacturer's instructions, especially regarding heat levels. If you have any question as to the compatibility of a Valco Melton unit for PUR hot melt, call your Valco Melton Representative before attempting to use the unit for PUR or solvent-based materials. **OTHERWISE, HAZARDOUS FUMES, EXPLOSION, DEATH, OR PERSONAL INJURY COULD OCCUR.**

**WARNING!**



Keep pump cover and electrical enclosures closed except during setup, service, and checkout procedures. **OTHERWISE, DEATH OR PERSONAL INJURY COULD OCCUR.**

**WARNING!**



People with respiratory problems (e.g., asthma, bronchitis, etc.) should not work in the vicinity of molten adhesive. **RESPIRATORY PROBLEMS MAY BE AGGRAVATED BY THE FUMES.** Do not wear a face mask when working around molten adhesive. **THE MASK MAY TRAP THE FUMES AND DEATH OR PERSONAL INJURY COULD OCCUR.**

**WARNING!**



Keep hot melt hoses away from walkways and the moving parts of hot melt systems. **OTHERWISE, PERSONAL INJURY OR EQUIPMENT DAMAGE COULD OCCUR.**

**WARNING!**



Hot surfaces! Do not touch! Use extreme caution when refilling the unit by hand. **OTHERWISE, PERSONAL INJURY COULD OCCUR.**

**WARNING!**



Wear protective gloves and goggles at all times around all machinery, especially hot melt. **OTHERWISE, SERIOUS PERSONAL INJURY COULD OCCUR.**

**WARNING!**



Never use an open flame to heat hot melt components or adhesive. **OTHERWISE, DEATH, PERSONAL INJURY, OR DAMAGE TO EQUIPMENT COULD OCCUR.**

---

***What to Do if Contact  
with Hot Adhesive  
Occurs***

---

If hot adhesive comes in contact with the skin, do the following:

**WARNING!**

Do not attempt to remove heated hot melt adhesive from the skin. OTHERWISE, SEVERE PERSONAL INJURY AND DEATH COULD OCCUR.

1. Immediately immerse the contacted area in clean, cold water.



It is strongly recommended that a source of clean, cold water be provided near the hot melt work area.

2. Cover the affected area with a clean, wet compress and call the emergency medical response system (such as 911) immediately.
3. Watch for and treat the subject for signs of shock while waiting for professional help to arrive.

---

***What to Do if  
Inhalation of  
Adhesive Fumes  
Occurs***

---

If adhesive fumes are inhaled, immediately follow these steps:

1. Take the victim away from the immediate work area.
2. Provide victim with fresh air.
3. Call the emergency medical response system (such as 911) immediately.

---

**What to Do if  
Adhesive-Related  
Fire or Explosion  
Occurs**

---

During the heating and melting process, the surface of the adhesive will be exposed to air. The mixture of polymer fumes and air can catch fire if the hot melt is overheated.

**WARNING!**



Poor ventilation, smoking, and open flames can cause overheated hot melt to ignite. Adequate ventilation must be provided. Smoking should be prohibited in the immediate vicinity of the molten adhesive. Open flames must be kept away from the area around molten adhesive. OTHERWISE, DEATH, PERSONAL INJURY, OR DAMAGE TO EQUIPMENT COULD OCCUR.

**WARNING!**



Exposed arcing may ignite the fume/air mixture. Shield all electrical equipment from melt fumes to avoid exposed arcing. OTHERWISE, PERSONAL INJURY OR EQUIPMENT DAMAGE COULD OCCUR.

**WARNING!**



Do not use a water extinguisher to extinguish the fire! OTHERWISE, PERSONAL INJURY OR EQUIPMENT DAMAGE COULD OCCUR.

If the hot melt adhesive ignites, promptly perform the following steps:

1. Sound a fire alarm.
2. Evacuate the immediate area.
3. Turn off all local electrical equipment at the source.
4. Leave the area immediately if conditions are unsafe.

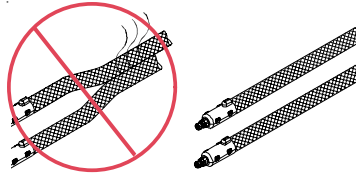
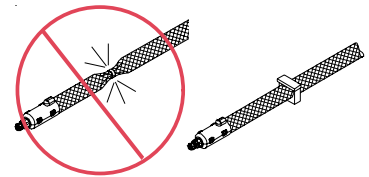
If you feel you can fight the fire **safely**, do **one** of the following:

- Smother the fire with a fire blanket.
- Aim a CO<sub>2</sub> fire extinguisher at the base of the flames.
- Aim a dry-powder fire extinguisher at the base of the flames.

## Hose Safety Information

**Do not** use bindings, wire ties, or unapproved fasteners around the hoses.

**Do** use approved wrapping (P/N KAP0434), making sure the wrapping is slightly snug but not tight.

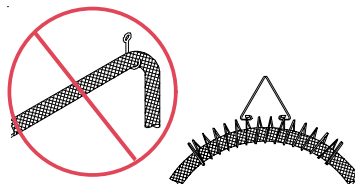
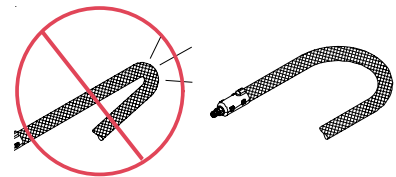


**Do not** place hoses close together.

**Do** allow at least 2 inches (5.1 cm) between hoses for proper ventilation.

**Do not** bend hoses sharply. **Do not** allow kinks or indentations in the hoses.

**Do** use a minimum bend radius of 10 inches for a 20-inch diameter coil hose.

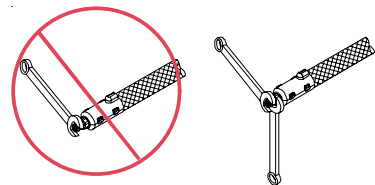


**Do not** use unapproved hooks to hang hoses. **Do not** wrap hoses over or around objects.

**Do** use a hose hanging kit (P/N 781xx827).

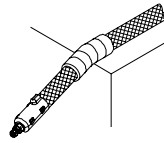
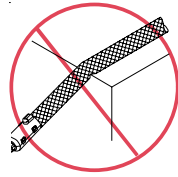
**Do not** use the “one handed/one wrench” technique to attach or remove hoses. **Do not** wrench on any surface other than the large hexagon swivel nuts.

**Do** use two hands and two wrenches to tighten or loosen connections on hoses. **Do** wrench only on large hexagon swivel nuts.





Hose Safety Information -  
Continued

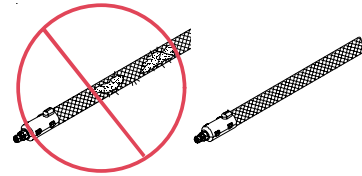


**Do not** allow hoses to rub against objects or to come into contact with sharp edges or points.

**Do** wrap the hoses in approved padding (P/N 795xx549) if the hoses must be installed where they will come into contact with objects.

**Do not** use worn, damaged, or bent hoses.

**Do** inspect all hoses regularly for damage and/or wear and replace damaged or worn hoses immediately.



---

# SECTION 3 - SPECIFICATIONS

---

<b>Maximum cycles per minute:</b>	20 (580mL/Min)
<b>Height:</b>	18.9" (480mm)
<b>Applied air pressure:</b>	20-40 psi
<b>Max outlet fluid pressure:</b>	400 psi

---

# SECTION 4 - OPERATION

---

---

## Operating the Pump

---

### CAUTION!



Do not use filled adhesives! Fillers are usually clay, which will damage the pump shaft and seals severely.

To operate the Valco PFRM5 Pump, follow these steps:

1. Make sure the air regulator pressure setting is zero (0) psi.
2. Turn on the air supply.
3. Adjust the air regulator to slowly increase the air pressure to the desired flow rate.




For efficient operation, air pressure should be adjusted to the lowest cycling rate that does not decrease flow rate. This may be the maximum flow rate for your particular conditions.

If the pump speeds up noticeably without a proportionate increase in flow as air pressure is increased, the pump may be starting to cavitate. This can be caused by excessive restriction in suction lines, or the suction line diameter may need to be increased. If suction line checks out for size and tightness, cavitation can be stopped by adjusting the air regulator to reduce air pressure.


# SECTION 5 - MAINTENANCE

## PFRM5 Rebuild Kit Parts Replacement

### Disassembly

 Refer to *Section 6 - Part Number List*, for part/kit details.

1. Relieve pressure from the air and glue lines.
2. Disassemble the pump (refer to Figure 4-1), and discard all components marked with an asterisk (\*). These components are supplied with rebuild kit 561xx259.

 The Dowel Pin (23) will need to be pressed out of the Lower Check (12).

3. Clean the remaining components thoroughly.

### CAUTION!



Make sure the piston (34) does not have any transfer tape left on it.

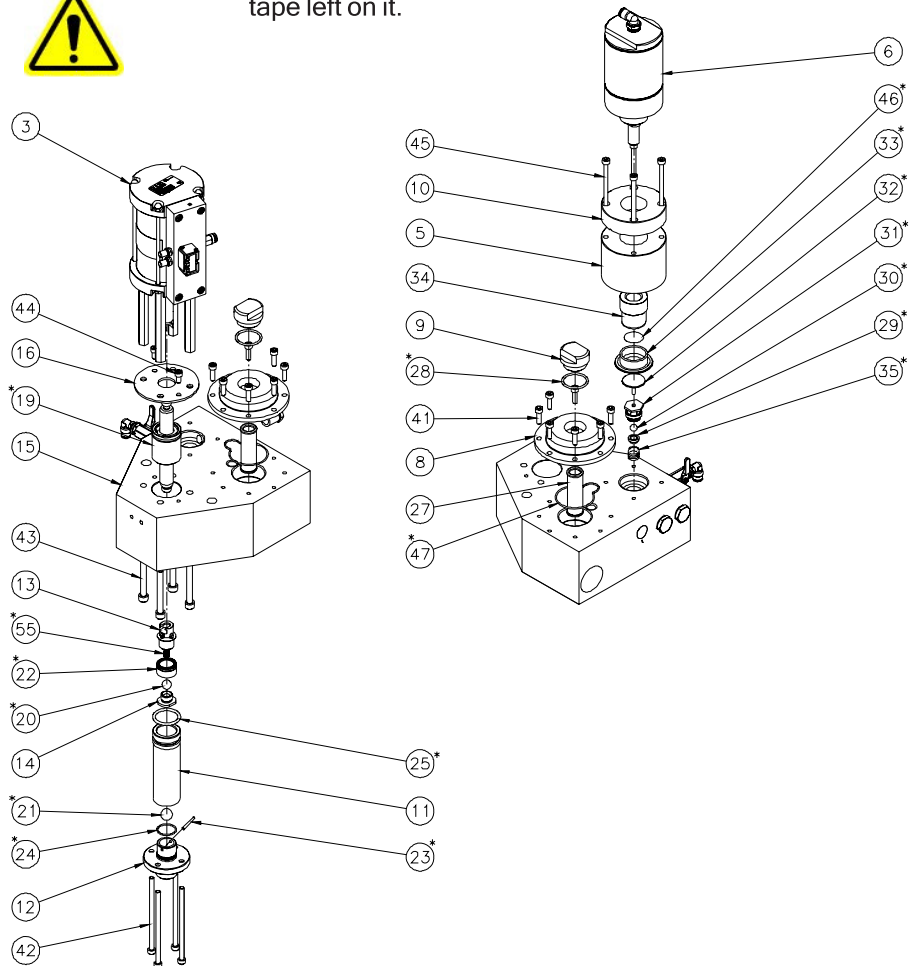


Figure 4-1. PFRM5 Assembly (561xx234)

**Reassembly**

1. Reassemble the filter section, referring to Figure 4-2.

**i** The O-Rings (28 & 47) are part of the rebuild kit (561xx259).

- a. Install the O-Ring (28) onto the Cap (9).
- b. Clean the Filter Screen (27).
- c. Apply Superlube (57) to the O-Ring (47) to help keep it in the Filter Cap (8) O-Ring groove.
- d. Tighten the M6 x 20 SHCS (41) to 12 N\*m (106 in\*lbs).

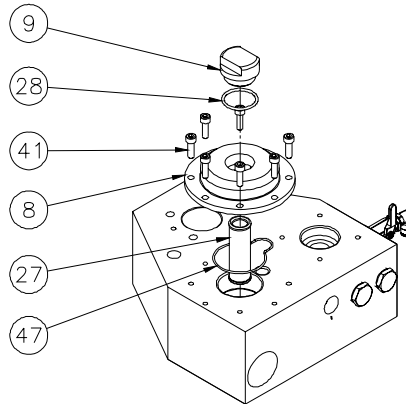


Figure 4-2. Filter Section

2. Reassemble the Regulator Seat components, referring to Figure 4-3.

**i** All components are included in the rebuild kit.

- a. Tighten the Ball Seat (31) to 30 N\*m (264 in\*lbs).

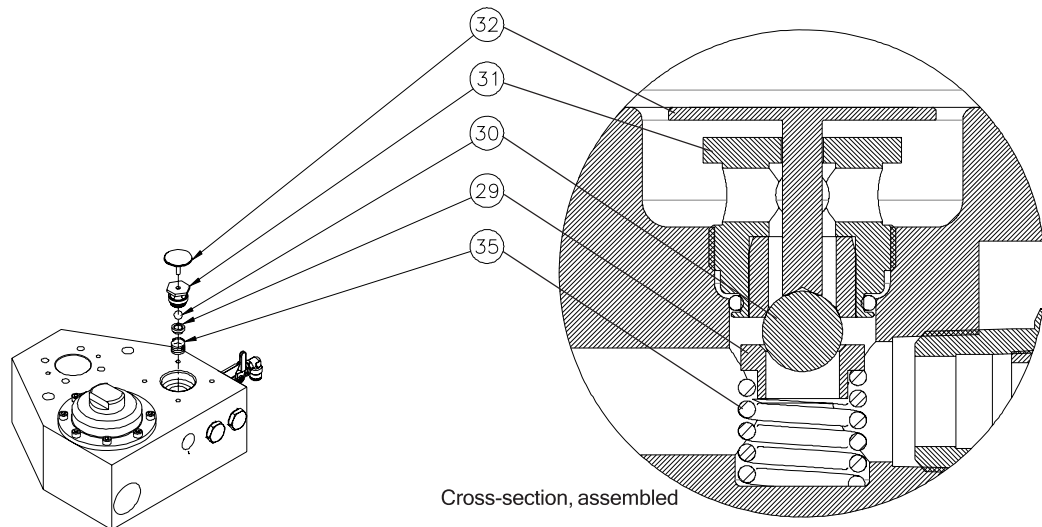



Figure 4-3. Regulator Seat Components

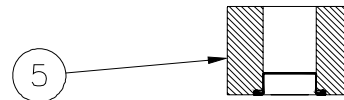
## Reassembly - Continued

3. Place the Diaphragm (33) face down on a smooth, clean surface.


 The diaphragm is included in the rebuild kit

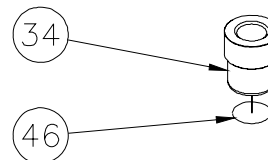


4. Place the Regulator Cylinder (5) over the diaphragm, so that the diaphragm flange sits in the Regulator Cylinder groove.

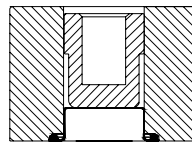


5. Place a piece of transfer tape (46) on the bottom of the piston (34).
  - a. Cut away any excess tape.
  - b. Remove the release liner from the transfer tape.


 Transfer tape is included in the rebuild kit.

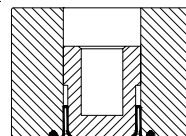


6. Place the Piston, adhesive side down, into the Regulator Cylinder, so that the adhesive contacts the Diaphragm.



7. Push the Piston down.

 The Diaphragm will surround the Piston.



## Reassembly - Continued

8. Reassemble the Regulator section, referring to Figure 4-4.

- a. Tighten the M6 x 90 SHCS (45) to 12 N\*m (106 in\*lbs).

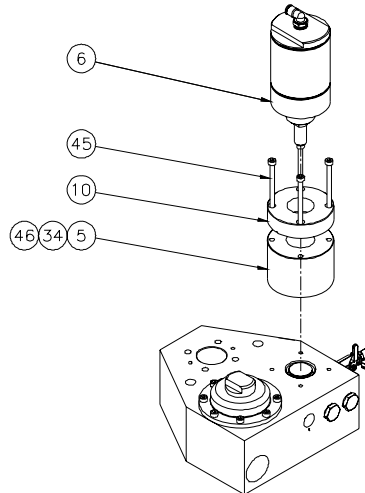


Figure 4-4. Regulator Section

9. Reassemble the Top Fluid section, referring to Figure 4-5.

- a. Apply Superlube (57) to the Seal Cartridge Assembly (19) O-Ring.

**i** The O-Ring on the Seal Cartridge must be face-up, toward the air cylinder (3).

- b. Tighten the M6 x 12 SHCS (44) to 12 N\*m (106 in\*lbs).

- c. Tighten the M8 x 70 SHCS (43) to 29 N\*m (255 in\*lbs).

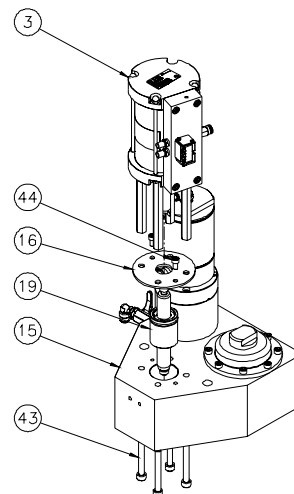


Figure 4-5. Top Fluid Section

---

 Reassembly - Continued
 

---

10. Reassemble the Piston, referring to Figure 4-6.



The spring (55), seal (22) and ball (20) are included in the rebuild kit

- a. Apply medium-strength Threadlocker to the piston check (14) and tighten it into the piston (13) to 34 N\*m (300 in\*lbs)

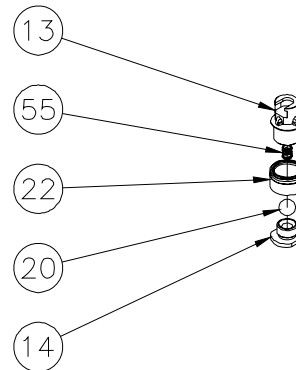
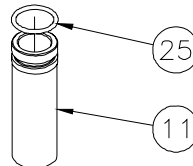


Figure 4-6. Piston

11. Insert the O-Ring (25) onto the Pump Tube (11).



The O-Ring is included in the rebuild kit.



12. Reassemble the Bottom Check, referring to Figure 4-7.

The ball (21), O-Ring (24) and pin (23) are included in the rebuild kit.

- a. After inserting the ball into the Check, press the dowel pin into the Lower Check (12).

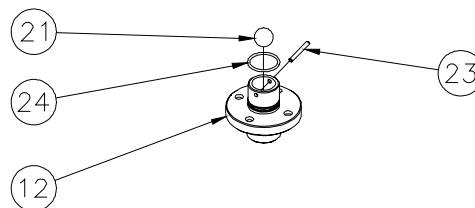


Figure 4-7. Bottom Check



---

*Reassembly - Continued*

---

## 13. Reassemble the Bottom Fluid section, referring to Figure 4-8.

- a. Apply Superlube (57) to the Piston Seal, Pump Tube O-Ring, Pump Tube I.D. and the Lower Check O-Ring.
- b. Tighten the M6 x 120 SHCS (42) to 12 N\*m (106 in\*lbs).

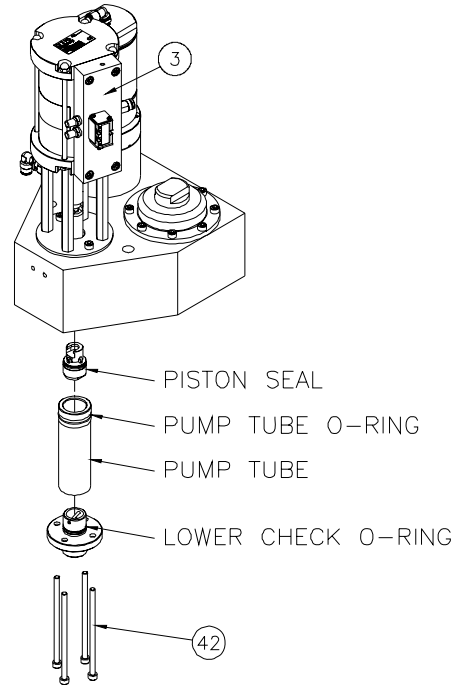


Figure 4-8. Bottom Fluid Section



The Air Cylinder Rebuild Kit part number is 561xx306.

---

## Installing the Pump

---

Specific installation procedures for the Valco PFRM5 depend on the fluid you use and your particular application requirements. Basic Valco PFRM5 installation and setup involves the following steps:

1. Mount and fasten the pump to the wall mounting bracket 6. Cycle the pump slowly until all the air is purged from the pump and hoses.



Wall mounting brackets are available from Valco Cincinnati.

2. Install plant air supply to the air motor.



If pump is equipped with a Valco Cincinnati air filter/regulator, plant air is connected to a quick-disconnect fitting in the input port of the regulator. A 10-foot air-supply hose with disconnect is available from Valco.

3. Install a second pump as a back-up if desired.



A pump/back-up pump installation is recommended when fluid is supplied in vats. With the availability of two pumps, vat replacement, pump service, and purging can be accomplished without system shutdown.

4. Connect the suction hose, discharge hose, air line, and power cable.
5. Turn on the power and open the air regulator until the pump starts.
6. Cycle the pump slowly until all the air is purged from the pump and hoses.



Fast cycling typically occurs when the pump loses pressure (empty pail, start up).

7. As long as the pump and lines are primed and adequate air pressure is supplied, the PFRM5 will start and stop as the valve is opened and closed.

---

# SECTION 6 - PART NUMBER LIST

---

---

## How to Order Parts

---

To order parts, please contact your closest Valco office by mail, phone, or Email:

---

### *USA*

---

**Valco Cincinnati, Inc.**  
497 Circle Freeway Drive  
Suite 490  
Cincinnati, OH 45246  
Tel: (513) 874-6550  
Fax: (513) 874-3612  
Email: [sales@valcomelton.com](mailto:sales@valcomelton.com)  
Web: <http://www.valcocincinnatiinc.com>

---

### *England*

---

**Valco Cincinnati Limited**  
Hortonwood 32  
Telford, TFI 7YN, England  
Tel: (+44) 1952-677911  
Fax: (+44) 1952-677945  
Email: [sales@valco.co.uk](mailto:sales@valco.co.uk)  
Web: <http://www.valco.co.uk>

---

### *Germany*

---

**Valco Cincinnati GmbH**  
Bonnerstrasse 349  
40589 Dusseldorf-Benrath, Germany  
Tel: +49 211 984 798-0  
Fax: +49 211 984 798-20

---

### *Spain*

---

**Melton S.L.U.**  
Pol. Industrial Agustinos  
calle G, n. 34  
31160 Orcoyen, Navarra, Spain  
Tel: (34) 948-321-580  
Fax: (34) 948-326-584

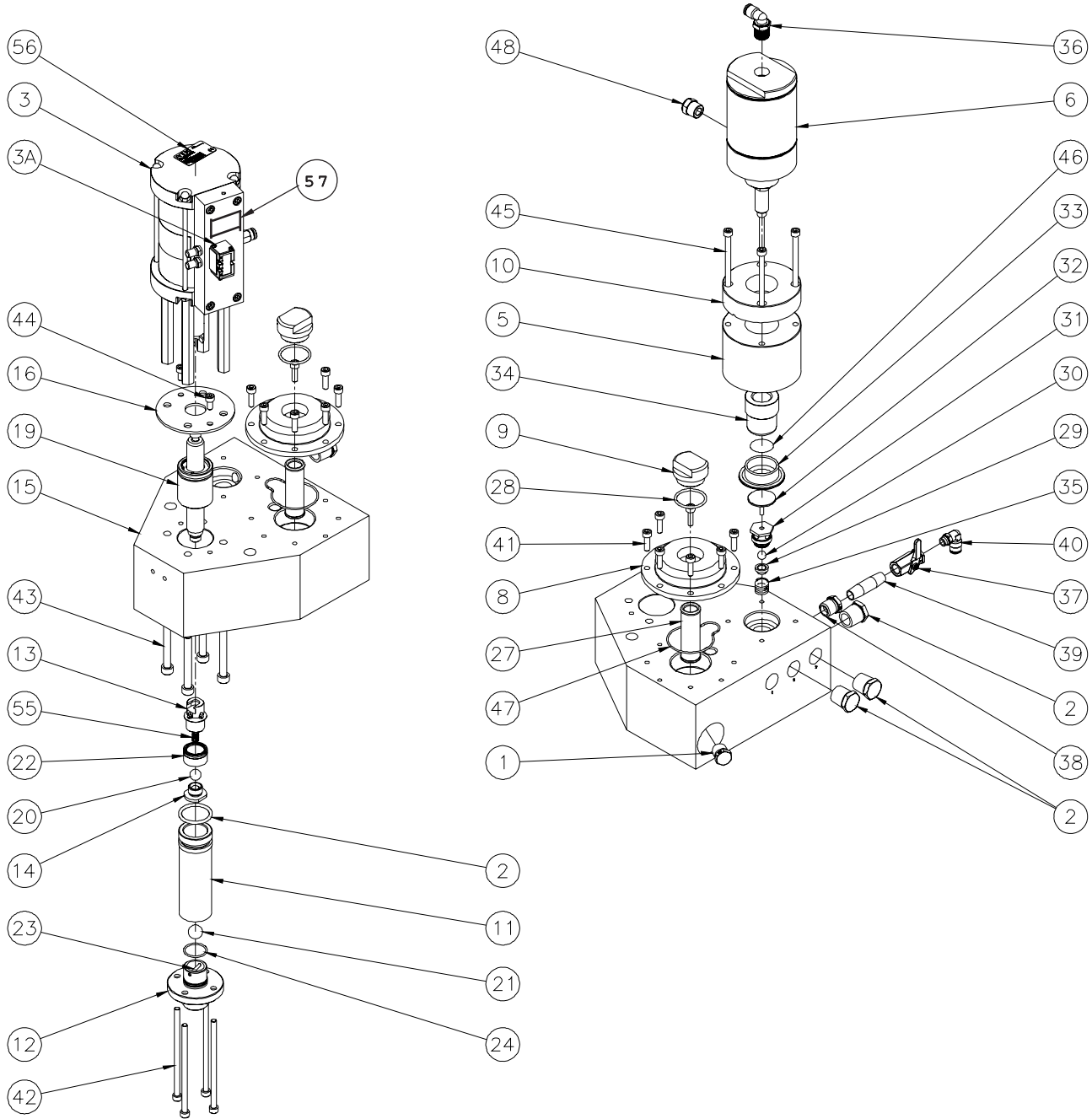
---

### *France*

---

**Valco Melton France**  
Technoparc des Hautes Faventines  
32 Rue Jean Bertin  
26000 Valence  
Tel: +33 (0)4 75 78 13 73  
Fax: +33 (0)4 75 55 74 20

# PFRM5 (561xx234)



PFRM5 - Continued

ITEM	PART NO.	DESCRIPTION	QTY.
1	799XX854	PLUG PIPE	1
2	799XX855	PLUG PIPE	3
3	561XX255	ASSY AIR CYLINDER	1
3A	769XX664	SPOOL VALVE	1
5	561XX248	HOUSING REGULATOR	1
6	782XX393	CYLINDER AIR	1
8	561XX245	CAP FILTER	1
9	593XX081	CAP	1
10	561XX250	CAP REGULATOR	1
11	561XX241	TUBE PUMP	1
12	561XX242	CHECK LOWER	1
13	561XX244	BODY PISTON	1
14	561XX243	CHECK PISTON	1
15	561XX237	MANIFOLD FLUID HANDLING PFRM5	1
16	561XX238	PLATE SEAL RETAINER	1
19	561XX254	ASSY SEAL CARTRIDGE PFRM5	1
20	561XX246	BALL, CERAMIC	1
21	561XX247	BALL, CERAMIC	1
22	746XX228	SEAL PISTON	1
23	884XX298	PIN DOWEL	1
24	746XX124	O-RING	1
25	745XX088	O-RING	1
27	593XX020	SCREEN 529-2	1
28	745XX059	O-RING	1
29	593XX054	BALL SUPPORT	1
30	593XX053	BALL, CERAMIC	1
31	593XX130	BALL SEAT MODIFICATION	1
32	593XX050	ACTIVATOR PIN	1
33	746XX226	DIAPHRAGM ROLLING	1
34	561XX249	PISTON REGULATOR	1
35	593XX055	SPRING	1
36	799XX786	ELBOW	1
37	703XX001	SHUT-OFF VALVE	1
38	797XX047	BUSHING	1
39	797XX089	NIPPLE, LONG	1
40	797XX476	ELBOW-SWIVEL	1
41	784XX426	SCREW	7
42	784XX576	SCREW	4
43	884XX279	SCREW	4
44	798XX069	SCREW	2
45	884XX234	SCREW	4
46	781XX818	ADHESIVE TRANSFER TAPE	1
47	745XX122	O-RING	1
48	782XX392	VENT SILENCER	1
55	783XX373	SPRING	1
56	781XX780	LABEL	1
57	782XX730	LABEL	1

---

## Kits

---

Wall Mounting Support Equipment Kit .....	561xx235
Pail Mounting Support Equipment Kit .....	561xx236
PFRM5 Rebuild Kit .....	561xx259
PFRM5 Air Cylinder Rebuild Kit .....	561xx306
<b>3.5 to 1 Regulator Kit .....</b>	<b>561xx260</b>
<b>2.0 to 1 Regulator Kit .....</b>	<b>561xx261</b>
<b><u>PFRM5 Rebuild Kit - 561xx259</u></b>	
19 Seal Cartridge with Shaft .....	561xx254
20 Ball, 1/2 dia .....	561xx246
21 Ball, 5/8 dia .....	561xx247
22 Piston Seal .....	746xx228
23 Dowel Pin .....	884xx298
24 O-Ring .....	746xx124
25 O-Ring .....	745xx088
28 O-Ring .....	745xx059
29 Ball Support .....	593xx054
30 Ball, 3/8 dia, ceramic .....	593xx053
31 Ball Seat Assembly .....	593xx130
32 Activator Pin .....	593xx050
33 Rolling Diaphragm .....	746xx226
35 Spring .....	593xx055
46 Adhesive Transfer Tape .....	781xx821
47 O-Ring .....	745xx122
48 Data Sheet .....	DS095
55 Spring .....	783xx373
57 Grease .....	782xx557
58 Instruction Sheet .....	IS0302
<b><u>PFRM5 Air Cylinder - 561xx306</u></b>	
1 Repair Kit .....	561xx305
2 Grease .....	782xx557
3 Threadlocker .....	710xx620
4 Illustration Drawing .....	999XD561-33

---

# SECTION 7 - WARRANTY

---

---

## Warranty Information

---

Valco Cincinnati, Inc. warrants its equipment worldwide against defects in material and workmanship as outlined in this section.

Liability of the company is limited to repair of the product, or replacement of any part shown to be defective, and does not extend to defects caused by accidents, misuse, abuse, neglect, tampering or deterioration by corrosion. This warranty does not cover those items determined by Valco Cincinnati, Inc. to be normal wear items such as seals, O-rings, diaphragms, springs, etc.

Reconditioned equipment, unless specified otherwise at the time of purchase, will be warranted as described above for a period of ninety (90) days from the date of shipment by Valco Cincinnati.

Components purchased by Valco Cincinnati, Inc. from others for inclusion in its products are warranted only to the extent of the original manufacturer's warranty. In no event shall Valco Cincinnati, Inc. be liable for indirect or consequential damages arising out of the use of Valco Cincinnati products.

This warranty is conditioned upon the prepaid return of the equipment claimed to be defective to Valco Cincinnati, Inc. for examination and verification. If claimed defect is verified, repairs or replacements will be made F.O.B. Cincinnati, Ohio, U.S.A. or ex-works Telford, U.K. If the inspection of the equipment does *not* disclose any defect of workmanship or material, any necessary repairs will be made at a reasonable charge and return transportation will be charged.

This is the only authorized Valco Cincinnati, Inc. warranty and is in lieu of all other expressed or implied warranties, representations or any other obligations on the part of Valco Cincinnati, Inc.

---

### ***Cold Glue Equipment and Electronic Controls***

---

The warranty for cold glue equipment and electronic controls for a period of one (1) year from the date of shipment by Valco Cincinnati, Inc.

---

### ***Hot Melt Units, Hoses, Valves, Guns, and Related Equipment***

---

All hot melt components except cast-in heating elements are warranted for a period of six (6) months from the date of shipment by Valco Cincinnati. Cast-in heaters carry an additional, pro-rated warranty not to exceed three (3) years from the date of shipment by ValcoMelton, a Valco Cincinnati, Inc. company.

---

## SECTION 8 - SERVICE

---

If a problem with your system persists, contact a ValcoMelton Technical Support representative. If your need is urgent, we encourage you to contact our corporate office in Cincinnati, Ohio, U.S.A. at (513) 874-6550. If the problem cannot be resolved, Valco Cincinnati, Inc. will promptly arrange to have a technical representative visit your facility. Any charges for a service call will be quoted at that time. Any part that fails during the warranty period shall be returned prepaid to Valco Cincinnati, Inc. by the customer for disposition.



Upon request, ValcoMelton personnel are available to repair or replace such parts at the customer's facility. Charges for this service include travel time and expenses.

If an equipment problem is the result of customer abuse, improper installation or operation, all travel time, labor, parts, and expenses will be charged to the customer.

If the responsibility for a problem cannot be absolutely determined, the customer will be charged for travel time and expenses only. No charge will be made for parts and labor.