

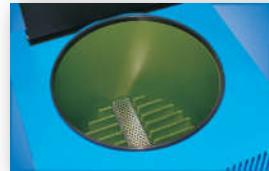


D10 & D16

Gear Pump Hot Melt Units

Valco Melton's D10 and D16 Series Units are ideal for packaging, graphic/print finishing, product assembly, labeling and various paper converting applications. The D10 and D16 series melt units feature an LED display, spur gear pump with fixed speed or "key-to-line" control and a multi-functional control system. Other options include an integrated glue pattern control, variable pressure relief and high output pumps.

- Teflon® coated tanks reduce char buildup for easy maintenance and reliable operation
- D-10 and D-16 units can be easily used in fixed speed or key-to-line applications
- Several relief valve options, from the simple single-stage relief valve to more sophisticated pneumatic relief systems
- Spur gear pumps are utilized for positive displacement of adhesive with robust consistency
- Independent control of each heated zone (up to 16) minimizes adhesive degradation and permits precise, uniform patterns
- Cartridge style heaters allow easy change out in the field
- Compliance with major approval codes worldwide
- 100% Compatibility with industry standard hoses, guns, tank filters and drain valves



Teflon® coated tanks with custom fin design maximize melt rate and efficiency.



Outlets for six hoses and guns allows for optimal flexibility.



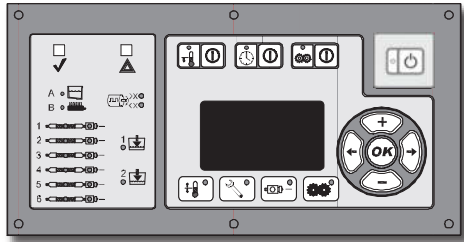
6 output manifold with integrated tank shutoff for ease of cleaning and maintenance.

For ease-of-use, a unified operator interface is used across the entire range of D-10 and D-16 units.



D Series Units feature an optional integrated pattern control capable of 6 outputs and 4 inputs along with line speed tracking. PID Controls provide precise RTD temperature sensing that optimize power usage and system performance.





D-10 and D-16 Units feature an easy-to-use touchpad with a bright LCD display screen to allow operators to quickly setup system parameters and monitor system operation.

D-10 and D-16 system touch-pad PID controller features:

- multi-language display
- programmable sequential zone start-up
- automatic temperature setback
- high/low temperature protection
- high-pressure protection
- Fahrenheit or Centigrade option
- system diagnostics
- seven-day programmable clock
- digital RPM readout
- optional low-level detection in tank
- optional variable-speed motor control

Technical Specifications

| | D-10 | D-16 |
|-------------------------|---|---|
| Gun Attachments: | 2, 4 or 6 | 2, 4 or 6 |
| Tank Capacity: | 24 lb (11kg) | 35 lb (16 kg) |
| Melt Rate:* | 51 lbs/hr (23 kg/hr) | 78 lbs/hr (35 kg/hr) |
| Pump: | Motor-driven spur gear pump/ Fixed or Variable | |
| Pump Rate: | 60 lb (27 kg)/hr | 60 lb (27 kg)/hr or 120 lb (54 kg)/hr |
| Temp Range: | 220° -400°F (105° -205°C) | |
| Temp. Stability: | 1°F (0,5°C) | |
| Electrical: | 208-240 VAC 1Φ/3Φ, 380 VAC 3Φ, 30 amps | |
| Weight: | 109 lb (50kg) | 120 lb (54kg) |
| Dimensions: | 25 (635mm) D 14.25 (362mm) W 21 (533mm) H | 25 (635mm) D 14.25 (362mm) W 25.1 (636mm) H |



For more information, visit valcomelton.com or contact your local Valco Melton representative.

World Headquarters: USA, Cincinnati, Ohio (Corporate Offices) • Tel:+1.513.874.6550 • Fax: +1.513.874.3612

Europe Headquarters: Spain, Navarra • Tel:+34.948.321.580 • Fax:+34.948.326.584

Asia Headquarters: China, Xiamen, Fujian • Tel:+86.592.591.7854 • Fax:+86.592.591.7834

info@valcomelton.com • Serving over 76 Countries Worldwide • valcomelton.com